

BILZ

CNC Werkzeugaufnahmen CNC Tool Holders



in alliance with



Inhaltsübersicht

Content

4	DIN 69871 (SK) Werkzeugaufnahmen DIN 69871 (SK) Tool holders
19	DIN 69893 (HSK-A) Werkzeugaufnahmen DIN 69893 (HSK-A) Tool holders
34	DIN 69893 (HSK-E) Werkzeugaufnahmen* DIN 69893 (HSK-E) Tool holders*
35	DIN JIS B 6339 (MAS 403 BT) Werkzeugaufnahmen* DIN JIS B 6339 (MAS 403 BT) Tool holders*
36	Zubehör Accessories
49	Technische Spezifikationen Technical details

* auf Anfrage

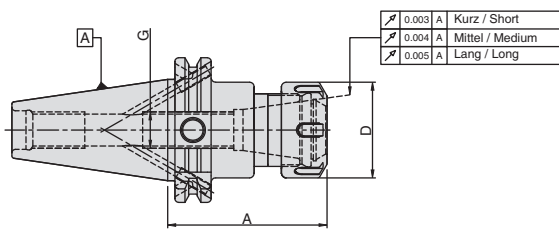
* On request

DIN 69871 (SK) Werkzeugaufnahmen

DIN 69871 (SK) Tool Holders

Spannzangenfutter ER Collet chuck ER	5
Fräseraufnahmen (Weldon) End mill holder (Weldon)	6-8
Fräseraufnahmen (Whistle Notch) End mill holder (Whistle Notch)	9
NC Bohrfutter NC Drill chucks	10
Hochleistungsfräaserspannfutter Hi-power milling chucks	10
Hydrodehnspannfutter Hydraulic expansion chucks	11
Aufnahmen für Morse-Kegel mit Anzugsgewinde Morse taper holder with thread	12
Aufnahmen für Morse-Kegel mit Austreiblappen Morse taper holder with tang	13
Aufnahmen für Einschraubfräser Chuck for threaded milling heads	14
Kombi-Aufsteckfräserdorne Combi shell mill holder	15
Messerkopf-Aufnahme Face mill holder	16
Reduzierhülsen Reduction Sleeves	17
Bohrstangenrohlinge Boring bar blanks	17
Kontrolldorn Test Arbor	18

Spannzangenfutter Typ ER für Spannzangen DIN 6499 Collet chuck Type ER for collets to DIN 6499



G6.3
12000
U/min
R.P.M.

SK 40

Spannzange Collet Type	Bereich Range	D (mm)	A (mm)	G	Kühlmittelezufuhr Coolant supply	N/W (Kg)	Bezeichnung Designation	Ident No.
ER16	1-10	28	70	M10	Form "AD/B"	1.0	WCCH/ER16-70/SK40	6733316
ER20	1-13	34	70	M12	Form "AD/B"	1.1	WCCH/ER20-70/SK40	6733319
ER25	2-16	42	70	M16	Form "AD/B"	1.1	WCCH/ER25-70/SK40	6733322
ER32	2-20	50	70	M22X1.5	Form "AD/B"	1.2	WCCH/ER32-70/SK40	6733325
ER40	3-26	63	80	M22X1.5	Form "AD/B"	1.5	WCCH/ER40-80/SK40	6733328
ER16	1-10	28	100	M10	Form "AD/B"	1.2	WCCH/ER16-100/SK40	6733317
ER20	1-13	34	70	M12	Form "AD/B"	1.3	WCCH/ER20-100/SK40	6733320
ER25	2-16	42	100	M16	Form "AD/B"	1.3	WCCH/ER25-100/SK40	6733323
ER32	2-20	50	100	M22X1.5	Form "AD/B"	1.5	WCCH/ER32-100/SK40	6733326
ER40	3-26	63	100	M22X1.5	Form "AD/B"	1.8	WCCH/ER40-100/SK40	6733329
ER16	1-10	28	160	M10	Form "AD/B"	1.6	WCCH/ER16-160/SK40	4600735
ER20	1-13	34	160	M12	Form "AD/B"	1.6	WCCH/ER20-160/SK40	5055182
ER25	2-16	42	160	M16	Form "AD/B"	1.7	WCCH/ER25-160/SK40	4600738
ER32	2-20	50	160	M22X1.5	Form "AD/B"	2.0	WCCH/ER32-160/SK40	4600741
ER40	3-26	63	160	M22X1.5	Form "AD/B"	2.0	WCCH/ER40-160/SK40	4600744

Ersatzteile und Zubehör / Spare Parts & Accessories :



Pg.41



Pg.37



Pg.39



Pg.44

SK 50

Spannzange Collet Type	Bereich Range	D (mm)	A (mm)	G	Kühlmittelezufuhr Coolant supply	N/W (Kg)	Bezeichnung Designation	Ident No.
ER16	1-10	28	63	M10	Form "AD/B"	3.0	WCCH/ER16-63/SK50	5055191
ER20	1-13	34	70	M12	Form "AD/B"	3.0	WCCH/ER20-70/SK50	5055192
ER25	2-16	42	70	M16	Form "AD/B"	3.0	WCCH/ER25-70/SK50	4601279
ER32	2-20	50	70	M22X1.5	Form "AD/B"	3.0	WCCH/ER32-70/SK50	4601282
ER40	3-26	63	80	M22X1.5	Form "AD/B"	3.3	WCCH/ER40-80/SK50	4601285
ER16	1-10	28	100	M10	Form "AD/B"	3.1	WCCH/ER16-100/SK50	4601277
ER20	1-13	34	100	M12	Form "AD/B"	3.2	WCCH/ER20-100/SK50	5055194
ER25	2-16	42	100	M16	Form "AD/B"	3.2	WCCH/ER25-100/SK50	4601280
ER32	2-20	50	100	M22X1.5	Form "AD/B"	3.2	WCCH/ER32-100/SK50	4601283
ER40	3-26	63	100	M22X1.5	Form "AD/B"	4.5	WCCH/ER40-100/SK50	4601286
ER16	1-10	28	160	M10	Form "AD/B"	3.6	WCCH/ER16-160/SK50	4601278
ER20	1-13	34	160	M12	Form "AD/B"	3.6	WCCH/ER20-160/SK50	5055195
ER25	2-16	42	160	M16	Form "AD/B"	3.7	WCCH/ER25-160/SK50	4601281
ER32	2-20	50	160	M22X1.5	Form "AD/B"	4.3	WCCH/ER32-160/SK50	4601284
ER40	3-26	63	160	M22X1.5	Form "AD/B"	5.3	WCCH/ER40-160/SK50	4601287

Ersatzteile und Zubehör / Spare Parts & Accessories :



Pg.41



Pg.37



Pg.39



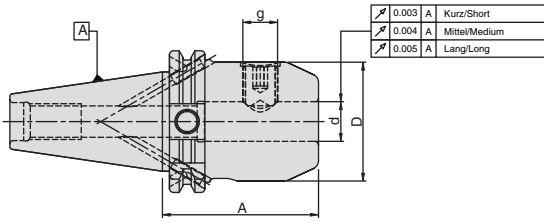
Pg.44

- Datenträger-Bohrung (10mm) Standard bei allen Grundhaltern
- Im Lieferumfang enthalten : Spannmutter (gewuchtet) und Einstellschraube

- Data carrier bore (10mm) as standard for all holders
- Delivery includes : Clamping nut (balanced) & adjusting screw

Fräseraufnahmen (Weldon) DIN 1835-B
End mill holder (Weldon) DIN 1835-B

G6.3
8000
Umz.
R.P.M.



SK40

d (mm)	D (mm)	A (mm)	G	Kühlmittelzufuhr Coolant supply	N/W (Kg)	Bezeichnung Designation	Ident No.
16	48	35	M14	Form "AD"	1.0	WSLH/16-35/SK40*	4600771
20	50	35	M16	Form "AD"	1.0	WSLH/20-35/SK40*	4600782
25	50	35	M16	Form "AD"	1.0	WSLH/25-35/SK40*	4600788
32	50	65	M16	Form "AD"	1.2	WSLH/32-65/SK40*	4600792
6	25	50	M6	Form "AD/B"	1.0	WSLH/06-50/SK40	4600745
8	28	50	M8	Form "AD/B"	1.0	WSLH/08-50/SK40	4600750
10	35	50	M10	Form "AD/B"	1.1	WSLH/10-50/SK40	4600755
12	42	50	M12	Form "AD/B"	1.2	WSLH/12-50/SK40	4600760
14	44	50	M12	Form "AD/B"	1.2	WSLH/14-50/SK40	4600765
16	48	63	M14	Form "AD/B"	1.2	WSLH/16-63/SK40	4600770
18	50	63	M14	Form "AD/B"	1.4	WSLH/18-63/SK40	4600776
20	50	63	M16	Form "AD/B"	1.5	WSLH/20-63/SK40	4600781
6	25	100	M6	Form "AD/B"	1.2	WSLH/06-100/SK40	4600746
8	28	100	M8	Form "AD/B"	1.2	WSLH/08-100/SK40	4600751
10	35	100	M10	Form "AD/B"	1.4	WSLH/10-100/SK40	4600756
12	42	100	M12	Form "AD/B"	1.6	WSLH/12-100/SK40	4600761
14	44	100	M12	Form "AD/B"	1.7	WSLH/14-100/SK40	4600766
16	48	100	M14	Form "AD/B"	1.7	WSLH/16-100/SK40	4600772
18	50	100	M14	Form "AD/B"	2.0	WSLH/18-100/SK40	4600777
20	52	100	M16	Form "AD/B"	2.0	WSLH/20-100/SK40	4600783
25	65	100	M18	Form "AD/B"	2.7	WSLH/25-100/SK40	4600787
32	72	100	M20	Form "AD/B"	2.5	WSLH/32-100/SK40	4600791
40	80	120	M20	Form "AD/B"	3.0	WSLH/40-120/SK40	4600795
6	25	160	M6	Form "AD/B"	1.5	WSLH/06-160/SK40	4600748
8	28	160	M8	Form "AD/B"	1.5	WSLH/08-160/SK40	4600753
10	35	160	M10	Form "AD/B"	1.7	WSLH/10-160/SK40	4600758
12	42	160	M12	Form "AD/B"	2.2	WSLH/12-160/SK40	4600763
14	44	160	M12	Form "AD/B"	2.3	WSLH/14-160/SK40	4600768
16	48	160	M14	Form "AD/B"	1.7	WSLH/16-160/SK40	4600774
18	50	160	M14	Form "AD/B"	2.6	WSLH/18-160/SK40	4600779
20	52	160	M16	Form "AD/B"	2.8	WSLH/20-160/SK40	4600785
25	65	160	M18	Form "AD/B"	3.8	WSLH/25-160/SK40	4600789
32	72	160	M20	Form "AD/B"	4.4	WSLH/32-160/SK40	4600793

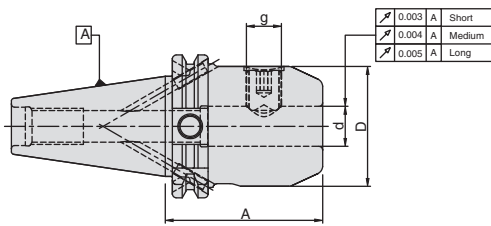
Ersatzteile und Zubehör / Spare Parts & Accessories : Pg.41

Pg.41

- Datenträger-Bohrung (10mm) Standard bei allen Grundhaltern
- Bohrungstoleranz H4
- Extra kurze Aufnahmen :
 - Die Spannschrauben sind im Mitnehmer
 - Maximale Steifigkeit dank kurzer Auskraglänge
- Im Lieferumfang enthalten : Spannschraube

- Data carrier bore (10mm) as standard for all holders
- Bore tolerance H4
- Extra short holders :
 - Locking screws are located in the same plane as drive slots.
 - Gives maximum rigidity due to short projection.
- Delivery includes : Locking screw

Fräseraufnahmen (Weldon) DIN 1835-B
End mill holder (Weldon) DIN 1835-B



G6.3
8000
Ummin.
R.P.M.

SK 50

d (mm)	D (mm)	A (mm)	G	Kühlmittelzufuhr Coolant supply	N/W (Kg)	Bezeichnung Designation	Ident No.
6	25	63	M6	Form "AD/B"	2.7	WSLH/06-63/SK50	4601288
8	28	63	M8	Form "AD/B"	2.7	WSLH/08-63/SK50	4601292
10	35	63	M10	Form "AD/B"	2.9	WSLH/10-63/SK50	4601296
12	42	63	M12	Form "AD/B"	3.0	WSLH/12-63/SK50	4601300
14	44	63	M12	Form "AD/B"	3.0	WSLH/14-63/SK50	4601304
16	48	63	M14	Form "AD/B"	3.0	WSLH/16-63/SK50	4601308
18	50	63	M14	Form "AD/B"	3.0	WSLH/18-63/SK50	4601312
20	52	63	M16	Form "AD/B"	3.1	WSLH/20-63/SK50	4601316
25	65	80	M18	Form "AD/B"	3.7	WSLH/25-80/SK50	4601320
6	25	100	M6	Form "AD/B"	3.0	WSLH/06-100/SK50	4601289
8	28	100	M8	Form "AD/B"	3.0	WSLH/08-100/SK50	4601293
10	35	100	M10	Form "AD/B"	3.2	WSLH/10-100/SK50	4601297
12	42	100	M12	Form "AD/B"	3.4	WSLH/12-100/SK50	4601301
14	44	100	M12	Form "AD/B"	3.4	WSLH/14-100/SK50	4601305
16	48	100	M14	Form "AD/B"	3.6	WSLH/16-100/SK50	4601309
18	50	100	M14	Form "AD/B"	3.6	WSLH/18-100/SK50	4601313
20	52	100	M16	Form "AD/B"	3.7	WSLH/20-100/SK50	4601317
25	65	120	M18	Form "AD/B"	4.3	WSLH/25-120/SK50	4601321
32	72	100	M20	Form "AD/B"	5.1	WSLH/32-100/SK50	4601324
40	80	100	M20	Form "AD/B"	6.5	WSLH/40-100/SK50	5054934
6	25	160	M6	Form "AD/B"	3.4	WSLH/06-160/SK50	4601290
8	28	160	M8	Form "AD/B"	3.4	WSLH/08-160/SK50	4601294
10	35	160	M10	Form "AD/B"	3.9	WSLH/10-160/SK50	4601298
12	42	160	M12	Form "AD/B"	4.1	WSLH/12-160/SK50	4601302
14	44	160	M12	Form "AD/B"	4.1	WSLH/14-160/SK50	4601306
16	48	160	M14	Form "AD/B"	4.5	WSLH/16-160/SK50	4601310
18	50	160	M14	Form "AD/B"	4.6	WSLH/18-160/SK50	4601314
20	52	160	M16	Form "AD/B"	4.8	WSLH/20-160/SK50	4601318
25	65	160	M18	Form "AD/B"	6.0	WSLH/25-160/SK50	4601322
32	72	160	M20	Form "AD/B"	6.6	WSLH/32-160/SK50	4601325
40	80	160	M20	Form "AD/B"	6.9	WSLH/40-160/SK50	4601328

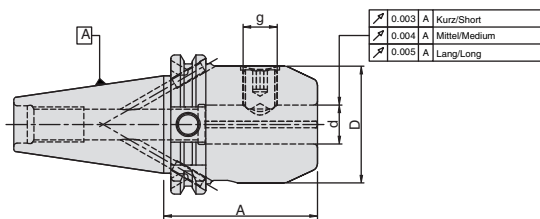
Ersatzteile und Zubehör / Spare Parts & Accessories : Pg.41

Pg.41

- Datenträger-Bohrung (10mm) Standard bei allen Grundhaltern
- Bohrungstoleranz H4
- Im Lieferumfang enthalten : Spannschraube

- Data carrier bore (10mm) as standard for all holders
- Bore tolerance H4
- Delivery includes : Locking screw

Fräseraufnahmen DIN 6359 mit Kühlkanal für Zylinderschäfte DIN 1835-B
 End mill holder to DIN 6359 with coolant channel for Weldon type
 end mills to DIN 1835-B



G6.3
8000
Ummin.
R.P.M.

SK 40

d (mm)	D (mm)	A (mm)	G	Kühlmittelzufuhr Coolant supply	N/W (Kg)	Bezeichnung Designation	Ident No.
6	25	50	M6	Form "AD/B"	0.9	WSLH-K/06-50/SK40	4600749
8	28	50	M8	Form "AD/B"	0.9	WSLH-K/08-50/SK40	4600754
10	35	50	M10	Form "AD/B"	1.0	WSLH-K/10-50/SK40	4600759
12	42	50	M12	Form "AD/B"	1.0	WSLH-K/12-50/SK40	4600764
14	44	50	M12	Form "AD/B"	1.0	WSLH-K/14-50/SK40	4600769
16	48	63	M14	Form "AD/B"	1.2	WSLH-K/16-63/SK40	4600775
18	50	63	M14	Form "AD/B"	1.3	WSLH-K/18-63/SK40	4600780
20	50	63	M16	Form "AD/B"	1.3	WSLH-K/20-63/SK40	4600786
6	25	100	M6	Form "AD/B"	1.1	WSLH-K/06-100/SK40	4600747
8	28	100	M8	Form "AD/B"	1.1	WSLH-K/08-100/SK40	4600752
10	35	100	M10	Form "AD/B"	1.3	WSLH-K/10-100/SK40	4600757
12	42	100	M12	Form "AD/B"	1.5	WSLH-K/12-100/SK40	4600762
14	44	100	M12	Form "AD/B"	1.6	WSLH-K/14-100/SK40	4600767
16	48	100	M14	Form "AD/B"	1.7	WSLH-K/16-100/SK40	4600773
18	50	100	M14	Form "AD/B"	1.8	WSLH-K/18-100/SK40	4600778
20	52	100	M16	Form "AD/B"	1.9	WSLH-K/20-100/SK40	4600784
25	65	100	M18	Form "AD/B"	2.3	WSLH-K/25-100/SK40	4600790
32	72	100	M20	Form "AD/B"	2.5	WSLH-K/32-100/SK40	4600794
40	80	120	M20	Form "AD/B"	3.4	WSLH-K/40-120/SK40	4600796

Ersatzteile und Zubehör / Spare Parts & Accessories : Pg.41

Pg.41

SK 50

d (mm)	D (mm)	A (mm)	G	Kühlmittelzufuhr Coolant supply	N/W (Kg)	Bezeichnung Designation	Ident No.
6	25	63	M6	Form "AD/B"	2.7	WSLH-K/06-63/SK50	4601291
8	28	63	M8	Form "AD/B"	2.7	WSLH-K/08-63/SK50	4601295
10	35	63	M10	Form "AD/B"	2.8	WSLH-K/10-63/SK50	4601299
12	42	63	M12	Form "AD/B"	2.9	WSLH-K/12-63/SK50	4601303
14	44	63	M12	Form "AD/B"	2.9	WSLH-K/14-63/SK50	4601307
16	48	63	M14	Form "AD/B"	3.0	WSLH-K/16-63/SK50	4601311
18	50	63	M14	Form "AD/B"	3.0	WSLH-K/18-63/SK50	4601315
20	52	63	M16	Form "AD/B"	3.2	WSLH-K/20-63/SK50	4601319
25	65	80	M18	Form "AD/B"	4.6	WSLH-K/25-80/SK50	4601323
32	72	100	M20	Form "AD/B"	6.4	WSLH-K/32-100/SK50	4601326
40	80	100	M20	Form "AD/B"	7.3	WSLH-K/40-100/SK50	4601329

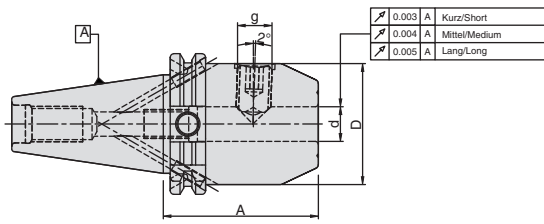
Ersatzteile und Zubehör / Spare Parts & Accessories : Pg.41

Pg.41

- Datenträger-Bohrung (10mm) Standard bei allen Grundhaltern
- Bohrungstoleranz H4
- Extra kurze Aufnahmen :
 - Die Spannschrauben sind im Mitnehmer
 - Maximale Steifigkeit dank kurzer Auskraglänge
- mit 2 Kühlkanälen entlang der Aufnahmebohrung versehen
- Im Lieferumfang enthalten : Spannschraube

- Data carrier bore (10mm) as standard for all holders
- Bore tolerance H4
- Extra short holders :
 - Locking screws are located in the same plane as drive slots.
 - Gives maximum rigidity due to short projection.
- With two coolant channels along the side of the bore.
- Delivery includes : Locking screw

Fräseraufnahmen DIN 6359 Whistle Notch für Zylinderschäfte DIN 1835-E
 End mill holder to DIN 6359 for Whistle Notch for end mills to DIN 1835-E



G6.3
8000
Ummin.
R.P.M.

SK 40

d (mm)	D (mm)	A (mm)	G	g	Kühlmittelezufuhr Coolant supply	N/W (Kg)	Bezeichnung Designation	Ident No.
6	25	50	M5	M6	Form "AD/B"	1.0	WSLH-E/06-50/SK40	4600797
8	28	50	M6	M8	Form "AD/B"	1.0	WSLH-E/08-50/SK40	4600798
10	35	50	M8	M10	Form "AD/B"	1.1	WSLH-E/10-50/SK40	4600799
12	42	50	M10	M12	Form "AD/B"	1.2	WSLH-E/12-50/SK40	4600800
14	44	50	M10	M12	Form "AD/B"	1.2	WSLH-E/14-50/SK40	4600801
16	48	63	M12	M14	Form "AD/B"	1.2	WSLH-E/16-63/SK40	4600802
18	50	63	M12	M14	Form "AD/B"	1.4	WSLH-E/18-63/SK40	4600803
20	50	63	M16	M16	Form "AD/B"	1.5	WSLH-E/20-63/SK40	4600804
25	65	100	M20	M18	Form "AD/B"	2.3	WSLH-E/25-100/SK40	4600805
32	72	100	M20	M20	Form "AD/B"	2.5	WSLH-E/32-100/SK40	4600806
40	80	120	M20	M20	Form "AD/B"	3.0	WSLH-E/40-120/SK40	4600807

Ersatzteile und Zubehör / Spare Parts & Accessories :



Pg.41



Pg.41

SK 50

d (mm)	D (mm)	A (mm)	G	g	Kühlmittelezufuhr Coolant supply	N/W (Kg)	Bezeichnung Designation	Ident No.
6	25	63	M5	M6	Form "AD/B"	3.5	WSLH-E/06-63/SK50	4601330
8	28	63	M6	M8	Form "AD/B"	3.6	WSLH-E/08-63/SK50	4601331
10	35	63	M8	M10	Form "AD/B"	3.7	WSLH-E/10-63/SK50	4601332
12	42	63	M10	M12	Form "AD/B"	3.9	WSLH-E/12-63/SK50	4601333
14	44	63	M10	M12	Form "AD/B"	3.9	WSLH-E/14-63/SK50	4601334
16	48	63	M12	M14	Form "AD/B"	3.9	WSLH-E/16-63/SK50	4601335
18	50	63	M12	M14	Form "AD/B"	4.0	WSLH-E/18-63/SK50	4601336
20	52	63	M16	M16	Form "AD/B"	4.0	WSLH-E/20-63/SK50	4601337
25	65	80	M20	M18	Form "AD/B"	4.7	WSLH-E/25-80/SK50	4601338
32	72	100	M20	M20	Form "AD/B"	5.1	WSLH-E/32-100/SK50	4601339
40	80	100	M20	M20	Form "AD/B"	6.5	WSLH-E/40-100/SK50	4601340

Ersatzteile und Zubehör / Spare Parts & Accessories :



Pg.41

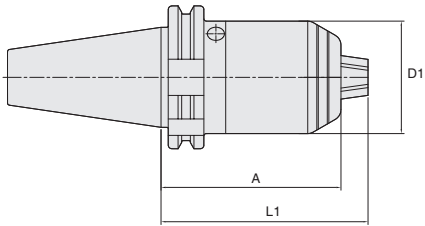


Pg.41

- Datenträger-Bohrung (10mm) Standard bei allen Grundhaltern
- Bohrungstoleranz H4
- Stirnseitige Nut als Erkennungsmerkmal (im Unterschied zu Weldon)
- Im Lieferumfang enthalten : Spannschraube und Verstellerschraube

- Data carrier bore (10mm) as standard for all holders
- Bore tolerance H4
- Groove on face for easy identification (to distinguish from Weldon)
- Delivery includes : Locking screw & Adjusting screw

NC Bohrfutter
NC Drill Chucks



SK 40

D1 (mm)	A (mm)	L1 (mm)	Range	Kühlmittelezufuhr Coolant supply	N/W (Kg)	Bezeichnung Designation	Ident No.
50	80	92	1-16	Form "A / AD"	1.55	NCDC/1-16-80/SK40	5055612

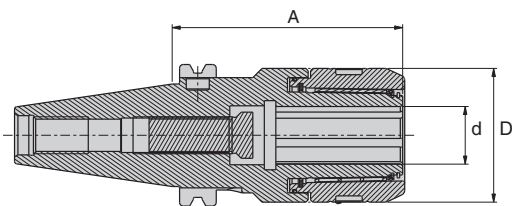
SK 50

D1 (mm)	A (mm)	L1 (mm)	Range	Kühlmittelezufuhr Coolant supply	N/W (Kg)	Bezeichnung Designation	Ident No.
50	80	92	1-16	Form "A / AD"	3.32	NCDC/1-16-80/SK50	5055617

- hohe Rundlaufgenauigkeit
- kompakte Bauweise
- sichere Spannung durch selbsthemmendes Getriebe
- für Rechts- und Linkslauf geeignet

- high run-out accuracy
- compact design
- secure clamping due to self-locking gear
- suitable for clockwise and counter-clockwise operations

Hochleistungsfräaserspannfutter
Hi-Power Milling Chuck



G6.3
15000
U/min
RPM

SK 40

d (mm)	D (mm)	A (mm)	Kühlmittelezufuhr Coolant supply	N/W (Kg)	Bezeichnung Designation	Ident No.
20	52	90	Form "AD"	1.9	WHPMC/20-90/SK40	5058644
32	58	105	Form "AD"	2.4	WHPMC/32-105/SK40	5055618

Ersatzteile und Zubehör / Spare Parts & Accessories : Pg.48

Pg.48

SK 50

d (mm)	D (mm)	A (mm)	Kühlmittelezufuhr Coolant supply	N/W (Kg)	Bezeichnung Designation	Ident No.
20	52	92	Form "AD"	2.8	WHPMC/20-90/SK50	5058645
32	66	105	Form "AD"	5.0	WHPMC/32-105/SK50	5055619

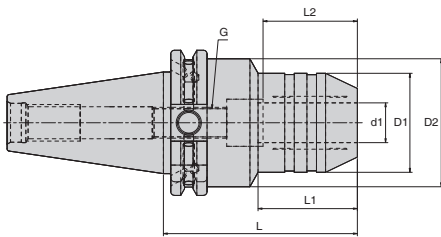
Ersatzteile und Zubehör / Spare Parts & Accessories : Pg.48

Pg.48

Refer page no.53 for more technical information

Hydrodehnspannfutter
Hydraulic Expansion chuck

G2.5
20000
U/min
R.P.M.



SK 40

D1 (mm)	D2 (mm)	D3 (mm)	D4 (mm)	L1	L2 max	L2 min	V	L3	G	Kühlmittelezufuhr Coolant supply	Bezeichnung Designation	Ident No.
6	25	28	50	80.5	37.5	27.5	10	30	M5X0.8	Form "AD/B"	WHEC/6-80.5/SK40	5055622
8	27	30	50	80.5	37.5	27.5	10	30	M6X1.0	Form "AD/B"	WHEC/8-80.5/SK40	5055623
10	29	32	50	80.5	42.5	32.5	10	31	M8X1.0	Form "AD/B"	WHEC/10-80.5/SK40	5055624
12	31	34	50	80.5	47.5	37.5	10	31	M8X1.0	Form "AD/B"	WHEC/12-80.5/SK40	5055625
14	33	36	50	80.5	47.5	37.5	10	31	M8X1.0	Form "AD/B"	WHEC/14-80.5/SK40	5055626
16	35	38	50	80.5	52.5	42.5	10	33	M10X1.0	Form "AD/B"	WHEC/16-80.5/SK40	5055627
18	38	41	50	80.5	52.5	42.5	10	33	M10X1.0	Form "AD/B"	WHEC/18-80.5/SK40	5055628
20	40	43	50	80.5	52.5	42.5	10	34	M10X1.0	Form "AD/B"	WHEC/20-80.5/SK40	5055629
25	53	57	66	80.5	61.0	51.0	10	22	M16X1.0	Form "AD/B"	WHEC/25-80.5/SK40	5055630
32	60	63	80	80.5	65.0	55.0	10	26	M16X1.0	Form "AD/B"	WHEC/32-80.5/SK40	5055631

Ersatzteile und Zubehör / Spare Parts & Accessories :

Pg.49

Pg.49

G2.5
15000
U/min
R.P.M.

SK 50

D1 (mm)	D2 (mm)	D3 (mm)	D4 (mm)	L1	L2 max	L2 min	V	L3	G	Kühlmittelezufuhr Coolant supply	Bezeichnung Designation	Ident No.
6	25	28	50	90	37.5	27.5	10	30.0	M5X0.8	Form "AD/B"	WHEC/6-80.5/SK50	5055632
8	27	30	50	90	37.5	27.5	10	30.0	M6X1.0	Form "AD/B"	WHEC/8-80.5/SK50	5055633
10	29	32	50	90	42.5	32.5	10	30.0	M8X1.0	Form "AD/B"	WHEC/10-80.5/SK50	5055635
12	31	34	50	90	47.5	37.5	10	30.0	M8X1.0	Form "AD/B"	WHEC/12-80.5/SK50	5055636
14	33	36	50	90	47.5	37.5	10	30.0	M8X1.0	Form "AD/B"	WHEC/14-80.5/SK50	5055637
16	35	38	50	90	52.5	42.5	10	30.0	M10X1.0	Form "AD/B"	WHEC/16-80.5/SK50	5055638
18	38	41	50	90	52.5	42.5	10	30.0	M10X1.0	Form "AD/B"	WHEC/18-80.5/SK50	5055639
20	40	43	50	90	52.5	42.5	10	34.0	M10X1.0	Form "AD/B"	WHEC/20-80.5/SK50	5055640
25	53	57	-	105	61.0	51.0	10	85.9	M10X1.0	Form "AD/B"	WHEC/25-80.5/SK50	5055641
32	60	63	-	115	65.0	55.0	10	95.9	M16X1.0	Form "AD/B"	WHEC/32-80.5/SK50	5055642

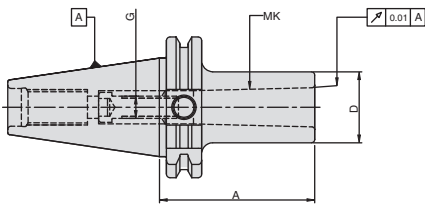
Ersatzteile und Zubehör / Spare Parts & Accessories :

Pg.49

Pg.49

Aufnahmen für Morse-Kegel mit Anzugsgewinde DIN 6364 / 228A
Morse taper holder with thread DIN 6364 / 228A

G6.3
8000
U/min
R.P.M.



SK 40

MK	D (mm)	A (mm)	G	Kühlmittelezufuhr Coolant supply	N/W (Kg)	Bezeichnung Designation	Ident No.
MT1	25	50	M6	Form "A"	1.0	WMTB/MT1-50/SK40	4600706
MT2	32	50	M10	Form "A"	1.0	WMTB/MT2-50/SK40	4600707
MT3	40	70	M12	Form "A"	1.1	WMTB/MT3-70/SK40	4600708
MT4	48	95	M16	Form "A"	1.2	WMTB/MT4-95/SK40	4600709

Ersatzteile und Zubehör / Spare Parts & Accessories : Pg.45 Pg.41

SK 50

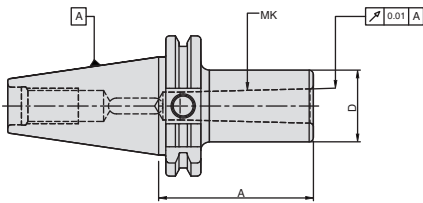
MK	D (mm)	A (mm)	G	Kühlmittelezufuhr Coolant supply	N/W (Kg)	Bezeichnung Designation	Ident No.
MT1	25	45	M6	Form "A"	2.7	WMTB/MT1-45/SK50	4601253
MT2	32	60	M10	Form "A"	2.8	WMTB/MT2-60/SK50	4601254
MT3	40	65	M12	Form "A"	2.9	WMTB/MT3-65/SK50	4601255
MT4	48	95	M16	Form "A"	3.2	WMTB/MT4-95/SK50	4601256
MT5	63	120	M24	Form "A"	4.0	WMTB/MT5-120/SK50	4601258

Ersatzteile und Zubehör / Spare Parts & Accessories : Pg.45 Pg.41

- Datenträger-Bohrung (10mm) Standard bei allen Grundhaltern
- Im Lieferumfang enthalten : eingebaute Innensechskantschraube
- Data carrier bore (10mm) as std. for all holders
- Delivery includes : build-in draw screw

Aufnahmen für Morse-Kegel mit Austreibblappen DIN 6383
Morse taper holder with tang to DIN 6383

G6.3
8000
U/min
R.P.M.



SK 40

MK	D (mm)	A (mm)	Kühlmittelezufuhr Coolant supply	N/W (Kg)	Bezeichnung Designation	Ident No.
MT1	25	50	Form "AD"	1.0	WMTA/MT1-50/SK40	4600808
MT2	32	50	Form "AD"	1.0	WMTA/MT2-50/SK40	4600809
MT3	40	70	Form "AD"	1.2	WMTA/MT3-70/SK40	4600810
MT4	48	95	Form "AD"	2.3	WMTA/MT4-95/SK40	4600811
MT2	32	117	Form "AD"	1.5	WMTA/MT2-117/SK40	4600703
MT3	40	133	Form "AD"	1.7	WMTA/MT3-133/SK40	4600704
MT4	48	156	Form "AD"	1.9	WMTA/MT4-156/SK40	4600705

Ersatzteile und Zubehör / Spare Parts & Accessories : Pg.41

SK 50

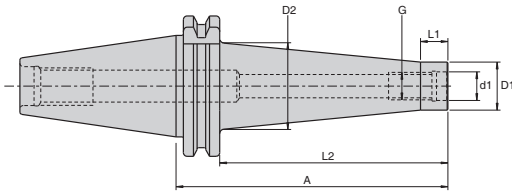
MK	D (mm)	A (mm)	Kühlmittelezufuhr Coolant supply	N/W (Kg)	Bezeichnung Designation	Ident No.
MT1	25	45	Form "AD"	3.5	WMTA/MT1-45/SK50	4601341
MT2	32	60	Form "AD"	3.6	WMTA/MT2-60/SK50	4601342
MT3	40	65	Form "AD"	3.6	WMTA/MT3-65/SK50	4601343
MT4	48	95	Form "AD"	3.7	WMTA/MT4-95/SK50	4601344
MT5	63	105	Form "AD"	3.8	WMTA/MT5-105/SK50	4601345
MT2	32	117	Form "AD"	3.8	WMTA/MT2-117/SK50	4601249
MT3	40	137	Form "AD"	3.8	WMTA/MT3-137/SK50	4601250
MT4	48	167	Form "AD"	3.8	WMTA/MT4-167/SK50	4601251
MT5	63	195	Form "AD"	3.8	WMTA/MT5-195/SK50	4601252

Ersatzteile und Zubehör / Spare Parts & Accessories : Pg.41

- Datenträger-Bohrung (10mm) Standard bei allen Grundhaltern
- Data carrier bore (10mm) as standard for all holders

Aufnahme für Einschraubfräser
Chuck for threaded milling heads

G6.3
 10000
 Limit
 R.P.M.



SK 40

d (mm)	D1 (mm)	D2 (mm)	A (mm)	L1 (mm)	L2 (mm)	G	Bezeichnung Designation	Ident No.
6.5	10.0	13	44	12	25.0	M6	WTA/M6-44/SK40	5054973
6.5	10.0	20	69	12	50.0	M6	WTA/M6-69/SK40	5054974
6.5	10.0	23	94	12	75.0	M6	WTA/M6-94/SK40	5054975
8.5	13.8	15	44	12	24.9	M8	WTA/M8-44/SK40	5054979
8.5	13.8	23	69	12	49.9	M8	WTA/M8-69/SK40	5054980
8.5	13.8	25	94	12	74.9	M8	WTA/M8-94/SK40	5054981
8.5	13.8	30	119	12	99.9	M8	WTA/M8-119/SK40	5054982
10.5	18.0	23	44	12	24.9	M10	WTA/M10-44/SK40	5054983
10.5	18.0	25	69	12	49.9	M10	WTA/M10-69/SK40	5054985
10.5	18.0	30	94	12	74.9	M10	WTA/M10-94/SK40	5054989
10.5	18.0	35	119	12	99.9	M10	WTA/M10-119/SK40	5054991
10.5	18.0	45	169	12	149.9	M10	WTA/M10-169/SK40	5054992
12.5	21.0	24	44	12	24.9	M12	WTA/M12-44/SK40	5054993
12.5	21.0	30	69	12	49.9	M12	WTA/M12-69/SK40	5054995
12.5	21.0	35	94	12	74.9	M12	WTA/M12-94/SK40	5054996
12.5	21.0	38	119	12	99.9	M12	WTA/M12-119/SK40	5054997
12.5	21.0	48	169	12	149.9	M12	WTA/M12-169/SK40	5054998
17.0	29.0	29	44	12	24.9	M16	WTA/M16-44/SK40	5054999
17.0	29.0	34	69	12	49.9	M16	WTA/M16-69/SK40	5055001
17.0	29.0	35	94	12	74.9	M16	WTA/M16-94/SK40	5055002
17.0	29.0	40	119	12	99.9	M16	WTA/M16-119/SK40	5055003
17.0	29.0	48	169	12	149.9	M16	WTA/M16-169/SK40	5054004

Ersatzteile und Zubehör / Spare Parts & Accessories : Pg.41

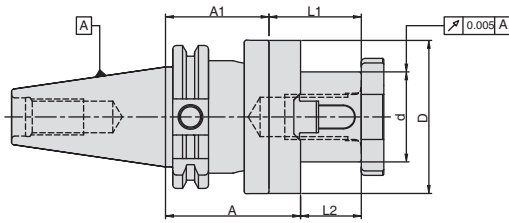
SK 50

d (mm)	D1 (mm)	D2 (mm)	A (mm)	L1 (mm)	L2 (mm)	G	Bezeichnung Designation	Ident No.
8.5	13.8	23	69	12	49.9	M8	WTA/M8-69/SK50	5055005
8.5	13.8	30	119	12	99.9	M8	WTA/M8-119/SK50	5055007
8.5	13.8	45	169	12	149.9	M8	WTA/M8-169/SK50	5055011
10.5	18.0	25	69	12	49.9	M10	WTA/M10-69/SK50	5055012
10.5	18.0	35	119	12	99.9	M10	WTA/M10-119/SK50	5055013
10.5	18.0	45	169	12	149.9	M10	WTA/M10-169/SK50	5055014
12.5	21.0	30	69	12	49.9	M12	WTA/M12-69/SK50	5055016
12.5	21.0	38	119	12	99.9	M12	WTA/M12-119/SK50	5055017
12.5	21.0	52	169	12	149.9	M12	WTA/M12-169/SK50	5055018
17.0	29.0	34	69	12	49.9	M16	WTA/M16-69/SK50	5055019
17.0	29.0	40	119	12	99.9	M16	WTA/M16-119/SK50	5055022
17.0	29.0	48	169	12	149.9	M16	WTA/M16-169/SK50	5055023

Ersatzteile und Zubehör / Spare Parts & Accessories : Pg.41

Kombi – Aufsteckfräserdorne DIN 6358
 Combi shell mill holder to DIN 6358

G6.3
8000
Umh.
R.P.M.



SK 40

d (mm)	D (mm)	A (mm)	A1 (mm)	L1 (mm)	L2 (mm)	Kühlmittelezufuhr Coolant Supply	N/W (Kg)	Bezeichnung Designation	Ident No.
16	32	55	45	27	17	Form "A"	1.1	WFSH/16-55/SK40	4600812
22	40	55	43	31	19	Form "A"	1.3	WFSH/22-55/SK40	4600814
27	48	55	43	33	21	Form "A"	1.5	WFSH/27-55/SK40	4600816
32	58	60	46	38	24	Form "A"	1.8	WFSH/32-60/SK40	4600818
40	70	60	46	41	27	Form "A"	2.1	WFSH/40-60/SK40	4600820
16	32	100	90	27	17	Form "A"	1.4	WFSH/16-100/SK40	4600813
22	40	100	88	31	19	Form "A"	1.8	WFSH/22-100/SK40	4600815
27	48	100	88	33	21	Form "A"	2.2	WFSH/27-100/SK40	4600817
32	58	100	86	38	24	Form "A"	2.6	WFSH/32-100/SK40	4600819
40	70	100	86	41	27	Form "A"	2.8	WFSH/40-100/SK40	4600821

Ersatzteile und Zubehör / Spare Parts & Accessories :



Pg.42



Pg.43



Pg.42



Pg.41

SK 50

d (mm)	D (mm)	A (mm)	A1 (mm)	L1 (mm)	L2 (mm)	Kühlmittelezufuhr Coolant Supply	N/W (Kg)	Bezeichnung Designation	Ident No.
16	32	55	45	27	17	Form "A"	2.9	WFSH/16-55/SK50	4601346
22	40	55	43	31	19	Form "A"	3.1	WFSH/22-55/SK50	4601348
27	48	55	43	33	21	Form "A"	3.3	WFSH/27-55/SK50	4601350
32	58	55	41	38	24	Form "A"	3.5	WFSH/32-55/SK50	4601352
40	70	55	41	41	27	Form "A"	3.7	WFSH/40-55/SK50	4601354
50	90	70	54	46	30	Form "A"	4.3	WFSH/50-70/SK50	5054972
16	32	100	90	27	17	Form "A"	3.4	WFSH/16-100/SK50	4601347
22	40	100	88	31	19	Form "A"	3.6	WFSH/22-100/SK50	4601349
27	48	100	88	33	21	Form "A"	3.9	WFSH/27-100/SK50	4601351
32	58	100	86	38	24	Form "A"	4.2	WFSH/32-100/SK50	4601353
40	70	100	86	41	27	Form "A"	4.9	WFSH/40-100/SK50	4601355

Ersatzteile und Zubehör / Spare Parts & Accessories :



Pg.42



Pg.43



Pg.42



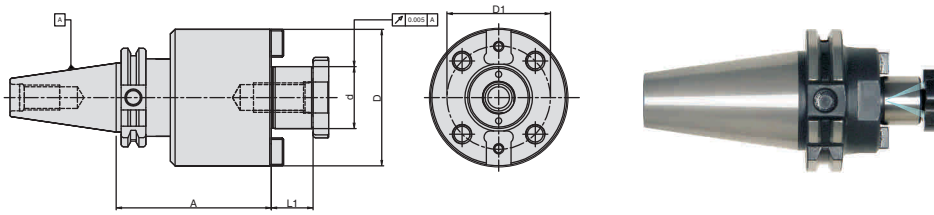
Pg.41

- Datenträger-Bohrung (10mm) Standard bei allen Grundhaltern
- Im Lieferumfang enthalten : Passfeder, Mitnehmerring und Fräseranzugsschraube

- Data carrier bore (10mm) as standard for all holders
- Delivery includes : Parallel key, drive ring and clamping screw

Messerkopf-Aufnahme DIN 6357 mit vergrößertem Bunddurchmesser
Face mill holder to DIN 6357 for cutters with drive key

G6.3
8000
U/min
R.P.M.



SK 40

d (mm)	D (mm)	A (mm)	L1 (mm)	D1	Kühlmittelezufuhr Coolant Supply	N/W (Kg)	Bezeichnung Designation	Ident No.
16	38	35	17		Form "AD/B"	1.0	WSMH/16-35/SK40	4600822
22	48	35	19		Form "AD/B"	1.0	WSMH/22-35/SK40	4600823
27	50	40	21		Form "AD/B"	1.1	WSMH/27-40/SK40	4600824
32	78	50	24		Form "AD/B"	1.3	WSMH/32-50/SK40	4600825
40	88	50	27	66.7	Form "AD/B"	1.6	WSMH/40-50/SK40+	4600826
16	38	100	17		Form "AD/B"	1.8	WSMH/16-100/SK40	5055095
22	48	100	19		Form "AD/B"	2.1	WSMH/22-100/SK40	5055102
27	58	100	21		Form "AD/B"	2.6	WSMH/27-100/SK40	5055104
32	78	100	24		Form "AD/B"	3.6	WSMH/32-100/SK40	5055105
40	88	100	27	66.7	Form "AD/B"	4.3	WSMH/40-100/SK40+	5055106
16	38	160	17		Form "AD/B"	2.1	WSMH/16-160/SK40	5055107
22	48	160	19		Form "AD/B"	2.7	WSMH/22-160/SK40	5055108
27	58	160	21		Form "AD/B"	3.7	WSMH/27-160/SK40	5055109
32	78	160	24		Form "AD/B"	5.8	WSMH/32-160/SK40	5055110
40	88	160	27	66.7	Form "AD/B"	6.6	WSMH/40-160/SK40+	5055111

Ersatzteile und Zubehör / Spare Parts & Accessories :



SK 50

d (mm)	D (mm)	A (mm)	L1 (mm)	D1	Kühlmittelezufuhr Coolant Supply	N/W (Kg)	Bezeichnung Designation	Ident No.
16	38	44	17		Form "AD/B"	2.8	WSMH/16-44/SK50	5055112
22	48	44	19		Form "AD/B"	3.0	WSMH/22-44/SK50	4601356
27	50	44	21		Form "AD/B"	3.2	WSMH/27-44/SK50	4601357
32	78	40	24	66.7	Form "AD/B"	4.0	WSMH/32-40/SK50	4601358
40	88	50	27	101.6	Form "AD/B"	4.2	WSMH/40-50/SK50+	4601359
60	129	70	40		Form "A"	4.8	WSMH/60-70/SK50+	4601360
16	38	100	17		Form "AD/B"	3.6	WSMH/16-100/SK50	5055123
22	48	100	19		Form "AD/B"	4.0	WSMH/22-100/SK50	5055125
27	50	100	21	66.7	Form "AD/B"	4.4	WSMH/27-100/SK50	5055126
32	78	100	24		Form "AD/B"	5.2	WSMH/32-100/SK50	5055127
40	88	100	27		Form "AD/B"	6.0	WSMH/40-100/SK50+	5055128
16	38	160	17		Form "AD/B"	3.9	WSMH/16-160/SK50	5055130
22	48	160	19	66.7	Form "AD/B"	4.2	WSMH/22-160/SK50	5055131
27	50	160	21		Form "AD/B"	5.3	WSMH/27-160/SK50	5055132
32	78	160	24		Form "AD/B"	7.2	WSMH/32-160/SK50	5055133
40	88	160	27		Form "AD/B"	8.8	WSMH/40-160/SK50+	5055134

Ersatzteile und Zubehör / Spare Parts & Accessories :

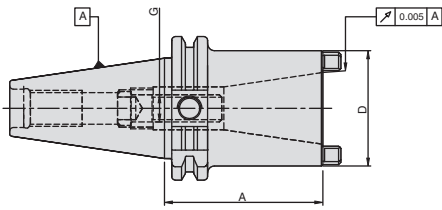


- Datenträger-Borung (10mm) Standard bei allen Grundhaltern
- Kühlbohrung an der Stirnseite Standard bei allen Grundhaltern
- +D = Ø 40, D = Ø 60 Mit 4 zusätzlichen Gewindebohrungen nach DIN 2079
- Im Lieferumfang enthalten : Mitnehmersteine und Fräseranzugsschraube

- Data carrier bore (10mm) as standard for all holders
- Coolant bore on the pilot face (holder with Form "AD/B") as standard for all holders
- +D = Ø 40, D = Ø 60 With additional 4 screw holes to DIN 2079
- Delivery includes : Drive keys and clamping screw

Zwischenhülsen
Reduction Sleeves

G6.3
8000
U/min
R.P.M.



SK 40

Innenkegelgröße Inside Taper	D (mm)	A (mm)	G	Kühlmittelezufuhr Coolant Supply	N/W (Kg)	Bezeichnung Designation	Ident No.
SK 30	51	50	M12	Form "A"	1.2	SK40-SK30-50	4600711
SK 40	63	100	M16	Form "A"	1.7	SK40-SK40-100	4600712

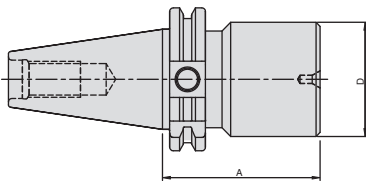
SK 50

Innenkegelgröße Inside Taper	D (mm)	A (mm)	G	Kühlmittelezufuhr Coolant Supply	N/W (Kg)	Bezeichnung Designation	Ident No.
SK 40	70	80	M16	Form "A"	3.6	SK50-SK40-80	4601260
SK 50	97	120	M24	Form "A"	6.0	SK50-SK50-120	4601261

Ersatzteile und Zubehör / Spare Parts & Accessories : Pg.45 Pg.41

- Datenträger-Bohrung (10mm) Standard bei allen Grundhaltern
- Im Lieferumfang enthalten : eingebaute Innensechskantschraube
- Data carrier bore (10mm) as standard for all holders
- Delivery includes : built-in draw screw

Bohrstangenrohlinge
Boring bar blanks



SK 40

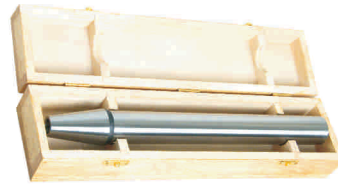
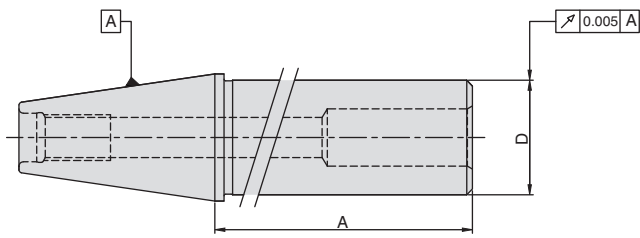
D (mm)	A (mm)	Kühlmittelezufuhr Coolant Supply	N/W (Kg)	Bezeichnung Designation	Ident No.
63	250	Form "AD/B"	6.5	WBBB/63-250/SK40	4600725

SK 50

D (mm)	A (mm)	Kühlmittelezufuhr Coolant Supply	N/W (Kg)	Bezeichnung Designation	Ident No.
63.5	300	Form "AD/B"	9.5	WBBB/63.5-300/SK50	4601272

- Im Lieferumfang enthalten : Steilkegel und Bund gehärtet und geschliffen, Schaft weich zur weiteren Bearbeitung.
- Delivery includes : Steep taper and flange hardened, body left soft.

Kontrolldorn
Test Arbor



SK 40

D (mm)	A (mm)	Kühlmittelzufuhr Coolant Supply	N/W (Kg)	Bezeichnung Designation	Ident No.
40	330	Nil	3.0	WTMM/40-330/SK40	5056226

SK 50

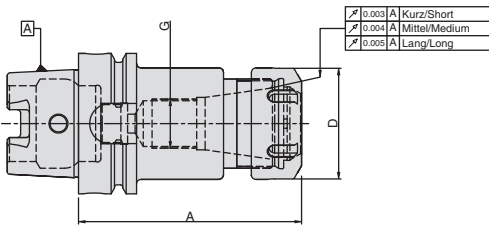
D (mm)	A (mm)	Kühlmittelzufuhr Coolant Supply	N/W (Kg)	Bezeichnung Designation	Ident No.
50	330	Nil	6.3	WTMM/40-330/SK50	5056227

- Diese Dorne haben keinen Bund.
- Kontrolldorne im Holzkasten geliefert.
- These gauge are without flange.
- Delivered in wooden box.

DIN 69893 (HSK-A) Werkzeugaufnahmen DIN 69893 (HSK-A) Tool Holders

Spannzangenfutter ER Collet chuck ER	20
Fräseraufnahmen (Weldon) End mill holder (Weldon)	21-23
Fräseraufnahmen (Whistle Notch) End mill holder (Whistle Notch)	24
NC Bohrfutter NC Drill chucks	25
Pendelhalter PN Floating chucks PN	25
Hydrodehnspannfutter Hydraulic expansion chucks	26
Hochleistungsfräterspannfutter Hi-power milling chucks	27
Aufnahmen für Morse-Kegel mit Anzugsgewinde Morse taper holder with thread	28
Aufnahmen für Morse-Kegel mit Austreiblappen Morse taper holder with tang	29
Aufnahmen für Einschraubfräser Chuck for threaded milling heads	30
Kombi-Aufsteckfräserdorne Combi shell mill holder	31
Messerkopf-Aufnahme Face mill holder	32
Bohrstangenrohlinge Boring bar blanks	33
Kontrolldorn Test Arbor	33

Spannzangenfutter Typ ER für Spannzangen DIN 6499
 Collet chuck type ER for collets to DIN 6499



G2.5
15000
Ummin.
R.P.M.

Feingewuchtete Aufnahme
 Fine balanced holders

HSK-A63								
Spannzange Collet Type	Bereich Range	D (mm)	A (mm)	G	Kühlmittelzufuhr Coolant Supply	N/W (Kg)	Bezeichnung Designation	Ident No.
ER16M	1-10	22	100	M10	Form "AD"	1.3	WCCH/ER16M-100/HSK-A63	5055257
ER20	1-13	34	100	M12	Form "AD"	1.3	WCCH/ER20-100/HSK-A63	5055258
ER25	2-16	42	100	M16	Form "AD"	1.7	WCCH/ER25-100/HSK-A63	4601696
ER32	2-20	50	100	M22X1.5	Form "AD"	2.3	WCCH/ER32-100/HSK-A63	4601698
ER40	3-26	63	120	M22X1.5	Form "AD"	2.7	WCCH/ER40-120/HSK-A63	4601700

Ersatzteile und Zubehör / Spare Parts & Accessories : Pg.37 Pg.39 Pg.44

G6.3
15000
Ummin.
R.P.M.

HSK-A63								
Spannzange Collet Type	Bereich Range	D (mm)	A (mm)	G	Kühlmittelzufuhr Coolant Supply	N/W (Kg)	Bezeichnung Designation	Ident No.
ER16M	1-10	22	160	M10	Form "AD"	1.2	WCCH/ER16M-160/HSK-A63	5055261
ER20M	1-13	28	160	M12	Form "AD"	1.2	WCCH/ER20M-160/HSK-A63	5055262
ER25M	2-16	35	160	M16	Form "AD"	1.7	WCCH/ER25M-160/HSK-A63	5055263
ER32	2-20	50	160	M22X1.5	Form "AD"	2.3	WCCH/ER32-160/HSK-A63	4601699
ER40	3-26	63	160	M22X1.5	Form "AD"	2.8	WCCH/ER40-160/HSK-A63	4601701

HSK-A100								
Spannzange Collet Type	Bereich Range	D (mm)	A (mm)	G	Kühlmittelzufuhr Coolant Supply	N/W (Kg)	Bezeichnung Designation	Ident No.
ER20	1-13	34	100	M12	Form "AD"	2.5	WCCH/ER20-100/HSK-A100	5055502
ER25	2-16	42	100	M16	Form "AD"	2.7	WCCH/ER25-100/HSK-A100	4601611
ER32	2-20	50	100	M22X1.5	Form "AD"	2.9	WCCH/ER32-100/HSK-A100	4601612
ER40	3-26	63	120	M22X1.5	Form "AD"	2.3	WCCH/ER40-120/HSK-A100	4601613

Ersatzteile und Zubehör / Spare Parts & Accessories : Pg.37 Pg.39 Pg.44

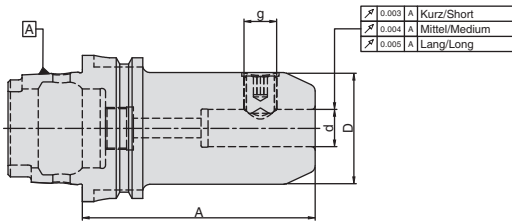
G6.3
15000
Ummin.
R.P.M.

HSK-A100								
Spannzange Collet Type	Bereich Range	D (mm)	A (mm)	G	Kühlmittelzufuhr Coolant Supply	N/W (Kg)	Bezeichnung Designation	Ident No.
ER20	1-13	34	160	M12	Form "AD"	2.5	WCCH/ER20-160/HSK-A100	5055504
ER25	2-16	42	160	M16	Form "AD"	3.2	WCCH/ER25-160/HSK-A100	5055506
ER32	2-20	50	160	M22X1.5	Form "AD"	3.5	WCCH/ER32-160/HSK-A100	5055507
ER40	3-26	63	160	M22X1.5	Form "AD"	3.8	WCCH/ER40-160/HSK-A100	5055508

Ersatzteile und Zubehör / Spare Parts & Accessories : Pg.37 Pg.39 Pg.44

- Kühlmittelrohr bitte separat bestellen (Siehe Seite 47)
- Im Lieferumfang enthalten : Spannmutter (gewuchtet) und Einstellschraube
- Please order coolant tube separately (See page 47)
- Delivery includes : Clamping nut (balanced) & adjusting screw

Fräseraufnahmen (Weldon) DIN 1835-B
End mill holder (Weldon) DIN 1835-B



G2.5
15000
U/min
R.P.M.

HSK-A63

d (mm)	D (mm)	A (mm)	G	Kühlmittelezufuhr Coolant Supply	N/W (Kg)	Bezeichnung Designation	Ident No.
6	25	65	M6	Form "AD"	1.0	WSLH/06-65/HSK-A63	4601702
8	28	65	M8	Form "AD"	1.0	WSLH/08-65/HSK-A63	4601705
10	35	65	M10	Form "AD"	1.0	WSLH/10-65/HSK-A63	4601708
12	42	80	M12	Form "AD"	1.4	WSLH/12-80/HSK-A63	4601711
14	44	80	M12	Form "AD"	1.4	WSLH/14-80/HSK-A63	4601715
16	48	80	M14	Form "AD"	1.4	WSLH/16-80/HSK-A63	4601719
18	50	80	M14	Form "AD"	1.7	WSLH/18-80/HSK-A63	4601723
20	52	80	M16	Form "AD"	1.7	WSLH/20-80/HSK-A63	4601727
6	25	100	M6	Form "AD"	1.18	WSLH/06-100/HSK-A63	4601703
8	28	100	M8	Form "AD"	1.18	WSLH/08-100/HSK-A63	4601706
10	35	100	M10	Form "AD"	1.18	WSLH/10-100/HSK-A63	4601709
12	42	100	M12	Form "AD"	1.5	WSLH/12-100/HSK-A63	5056629
16	48	100	M14	Form "AD"	1.7	WSLH/16-100/HSK-A63	5056632
25	65	110	M18	Form "AD"	2.5	WSLH/25-110/HSK-A63	4601730
32	72	110	M20	Form "AD"	2.5	WSLH/32-110/HSK-A63	4601732
40	80	160	M20	Form "AD"	3.2	WSLH/40-125/HSK-A63	4601734

Ersatzteile und Zubehör / Spare Parts & Accessories : Pg.41

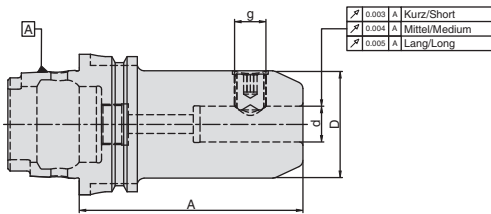
G6.3
15000
U/min
R.P.M.

HSK-A63

d (mm)	D (mm)	A (mm)	G	Kühlmittelezufuhr Coolant Supply	N/W (Kg)	Bezeichnung Designation	Ident No.
6	25	160	M6	Form "AD"	1.4	WSLH/06-160/HSK-A63	5056636
8	28	160	M8	Form "AD"	1.5	WSLH/08-160/HSK-A63	5056638
10	35	160	M10	Form "AD"	1.8	WSLH/10-160/HSK-A63	5056640
12	42	160	M12	Form "AD"	1.8	WSLH/12-160/HSK-A63	5056642
16	48	160	M14	Form "AD"	1.8	WSLH/16-160/HSK-A63	5056643
20	52	160	M16	Form "AD"	1.67	WSLH/20-160/HSK-A63	5056645

Ersatzteile und Zubehör / Spare Parts & Accessories : Pg.41

Fräseraufnahmen (Weldon) DIN 1835-B
End mill holder (Weldon) DIN 1835-B



G6.3
12000
Ummin.
R.P.M.

HSK-A100

d (mm)	D (mm)	A (mm)	G	Kühlmittelezufuhr Coolant Supply	N/W (Kg)	Bezeichnung Designation	Ident No.
6	25	80	M6	Form "AD"	2.5	WSLH/06-80/HSK-A100	4601614
8	28	80	M8	Form "AD"	2.4	WSLH/08-80/HSK-A100	4601616
10	35	80	M10	Form "AD"	2.5	WSLH/10-80/HSK-A100	4601618
12	42	80	M12	Form "AD"	2.7	WSLH/12-80/HSK-A100	4601620
14	44	80	M12	Form "AD"	2.7	WSLH/14-80/HSK-A100	4601622
16	48	100	M14	Form "AD"	2.8	WSLH/16-100/HSK-A100	4601624
18	50	100	M14	Form "AD"	2.9	WSLH/18-100/HSK-A100	4601626
20	52	100	M16	Form "AD"	3.2	WSLH/20-100/HSK-A100	4601628
25	65	100	M18	Form "AD"	3.7	WSLH/25-100/HSK-A100	4601630
32	72	100	M20	Form "AD"	4.0	WSLH/32-100/HSK-A100	4601632
40	80	105	M20	Form "AD"	4.7	WSLH/40-105/HSK-A100	4601634

Ersatzteile und Zubehör / Spare Parts & Accessories : Pg.41

G6.3
10000
Ummin.
R.P.M.

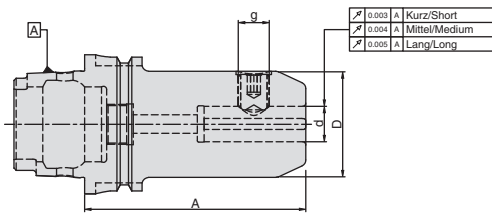
HSK-A100

d (mm)	D (mm)	A (mm)	G	Kühlmittelezufuhr Coolant Supply	N/W (Kg)	Bezeichnung Designation	Ident No.
6	25	160	M6	Form "AD"	2.7	WSLH/06-160/HSK-A100	5056735
8	28	160	M8	Form "AD"	2.9	WSLH/08-160/HSK-A100	5056736
10	35	160	M10	Form "AD"	3.1	WSLH/10-160/HSK-A100	5056737
12	42	160	M12	Form "AD"	3.6	WSLH/12-160/HSK-A100	5056739
16	48	160	M14	Form "AD"	3.9	WSLH/16-160/HSK-A100	5056740
20	52	160	M16	Form "AD"	4.4	WSLH/20-160/HSK-A100	5056742
25	65	160	M18	Form "AD"	5.3	WSLH/25-160/HSK-A100	5056743

Ersatzteile und Zubehör / Spare Parts & Accessories : Pg.41

- Bohrungstoleranz H4
- Kühlmittelrohr bitte separat bestellen (Siehe Seite 47)
- Im Lieferumfang enthalten : Spannschraube
- Bore tolerance H4
- Please order coolant tube separately (See page 47)
- Delivery includes : Locking screw

Fräseraufnahmen DIN 6359 mit Kühlkanal für Zylinderschäfte DIN 1835-B
 End mill holder to DIN 6359 with coolant channel for Weldon type
 end mills to DIN 1835-B



G2.5
15000
U/min
R.P.M.

HSK-A63

d (mm)	D (mm)	A (mm)	G	Kühlmittelezufuhr Coolant Supply	N/W (Kg)	Bezeichnung Designation	Ident No.
6	25	65	M6	Form "AD"	1.2	WSLH-K/06-65/HSK-A63	4601704
8	28	65	M8	Form "AD"	1.2	WSLH-K/08-65/HSK-A63	4601707
10	35	65	M10	Form "AD"	1.2	WSLH-K/10-65/HSK-A63	4601710
12	42	80	M12	Form "AD"	1.4	WSLH-K/12-80/HSK-A63	4601714
14	44	80	M12	Form "AD"	1.4	WSLH-K/14-80/HSK-A63	4601718
16	48	80	M14	Form "AD"	1.4	WSLH-K/16-80/HSK-A63	4601722
18	50	80	M14	Form "AD"	1.4	WSLH-K/18-80/HSK-A63	4601726
20	52	80	M16	Form "AD"	1.4	WSLH-K/20-80/HSK-A63	4601729
25	65	110	M18	Form "AD"	2.5	WSLH-K/25-110/HSK-A63	4601731
32	72	110	M20	Form "AD"	2.7	WSLH-K/32-110/HSK-A63	4601733
40	80	125	M20	Form "AD"	3.1	WSLH-K/40-125/HSK-A63	4601735

Ersatzteile und Zubehör / Spare Parts & Accessories : Pg.41

Feingewichtete Aufnahme
 Fine balanced holders

G6.3
15000
U/min
R.P.M.

HSK-A100

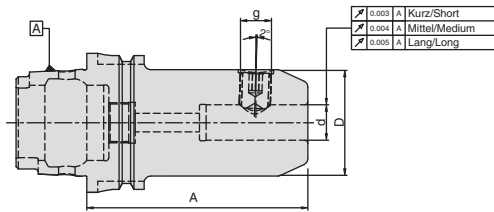
d (mm)	D (mm)	A (mm)	G	Kühlmittelezufuhr Coolant Supply	N/W (Kg)	Bezeichnung Designation	Ident No.
6	25	80	M6	Form "AD"	2.2	WSLH-K/06-80/HSK-A100	4601615
8	28	80	M8	Form "AD"	2.2	WSLH-K/08-80/HSK-A100	4601617
10	35	80	M10	Form "AD"	2.3	WSLH-K/10-80/HSK-A100	4601619
12	42	80	M12	Form "AD"	2.4	WSLH-K/12-80/HSK-A100	4601621
14	44	80	M12	Form "AD"	2.5	WSLH-K/14-80/HSK-A100	4601623
16	48	100	M14	Form "AD"	2.8	WSLH-K/16-100/HSK-A100	4601625
18	50	100	M14	Form "AD"	2.9	WSLH-K/18-100/HSK-A100	4601627
20	52	100	M16	Form "AD"	3.1	WSLH-K/20-100/HSK-A100	4601629
25	65	100	M18	Form "AD"	3.5	WSLH-K/25-100/HSK-A100	4601631
32	72	100	M20	Form "AD"	3.8	WSLH-K/32-100/HSK-A100	4601633
40	80	105	M20	Form "AD"	4.7	WSLH-K/40-105/HSK-A100	4601635

Ersatzteile und Zubehör / Spare Parts & Accessories : Pg.41

- Bohrungstoleranz H4
- Kühlmittelerohr bitte separat bestellen (Siehe Seite 47)
- mit 2 Kühlkanälen entlang der Aufnahmebohrung versehen
- Im Lieferumfang enthalten : Spannschraube

- Bore tolerance H4
- Please order coolant tube separately (See page 47)
- with two coolant channels along the side of the bore.
- Delivery includes : Locking screw

Fräseraufnahmen DIN 6359 Whistle Notch für Zylinderschäfte DIN 1835-E
 End mill holder to DIN 6359 for Whistle Notch for end mills to DIN 1835-E



G2.5
15000
U/min
R.P.M.

HSK-A63

d (mm)	D (mm)	A (mm)	G	Kühlmittelezufuhr Coolant Supply	N/W (Kg)	Bezeichnung Designation	Ident No.
6	25	80	M6	Form "AD"	0.9	WSLH-E/06-80/HSK-A63	4601736
8	28	80	M8	Form "AD"	1.0	WSLH-E/08-80/HSK-A63	4601737
10	35	80	M10	Form "AD"	1.1	WSLH-E/10-80/HSK-A63	4601738
12	42	90	M12	Form "AD"	1.4	WSLH-E/12-90/HSK-A63	4601739
14	44	90	M12	Form "AD"	1.4	WSLH-E/14-90/HSK-A63	4601740
16	48	100	M14	Form "AD"	1.6	WSLH-E/16-100/HSK-A63	4601741
18	50	100	M14	Form "AD"	1.7	WSLH-E/18-100/HSK-A63	4601742
20	52	100	M16	Form "AD"	1.8	WSLH-E/20-100/HSK-A63	4601743
25	65	110	M18	Form "AD"	2.4	WSLH-E/25-110/HSK-A63	4601744
32	72	110	M20	Form "AD"	2.7	WSLH-E/32-110/HSK-A63	4601745

Ersatzteile und Zubehör / Spare Parts & Accessories : Pg.41

G6.3
15000
U/min
R.P.M.

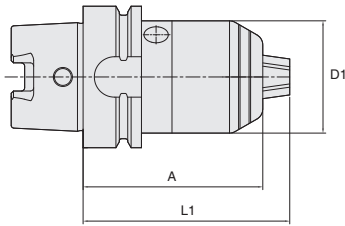
HSK-A100

d (mm)	D (mm)	A (mm)	G	Kühlmittelezufuhr Coolant Supply	N/W (Kg)	Bezeichnung Designation	Ident No.
6	25	90	M6	Form "AD"	2.3	WSLH-E/06-90/HSK-A100	4601636
8	28	90	M8	Form "AD"	2.3	WSLH-E/08-90/HSK-A100	4601637
10	35	90	M10	Form "AD"	2.5	WSLH-E/10-90/HSK-A100	4601638
12	42	100	M12	Form "AD"	2.7	WSLH-E/12-100/HSK-A100	4601639
14	44	100	M12	Form "AD"	2.7	WSLH-E/14-100/HSK-A100	4601640
16	48	100	M14	Form "AD"	2.8	WSLH-E/16-100/HSK-A100	4601641
18	50	100	M14	Form "AD"	3.0	WSLH-E/18-100/HSK-A100	4601642
20	52	110	M16	Form "AD"	3.4	WSLH-E/20-110/HSK-A100	4601643
25	65	120	M18	Form "AD"	4.0	WSLH-E/25-120/HSK-A100	4601644
32	72	120	M20	Form "AD"	4.4	WSLH-E/32-120/HSK-A100	4601645
40	80	120	M20	Form "AD"	4.7	WSLH-E/40-120/HSK-A100	4601646

Ersatzteile und Zubehör / Spare Parts & Accessories : Pg.41

- Bohrungstoleranz H4
- Kühlmittelrohr bitte separat bestellen (Siehe Seite 47)
- Stirnseitige Nut als Erkennungsmerkmal (im Unterschied zu Weldon)
- Im Lieferumfang enthalten : Spannschraube und Verstellechraube
- Bore tolerance H4
- Please order coolant tube separately (See page 47)
- Groove on face for easy identification (to distinguish from Weldon)
- Delivery includes : Locking screw & adjusting screw

NC Bohrfutter
NC Drill Chucks



HSK-A63

D1 (mm)	A (mm)	L1 (mm)	Range	Kühlmittelezufuhr Coolant Supply	N/W (Kg)	Bezeichnung Designation	Ident No.
50	98	110	1-16	Form "AD"	1.56	WNDC/16-98/HSK-A63	5056229

HSK-A100

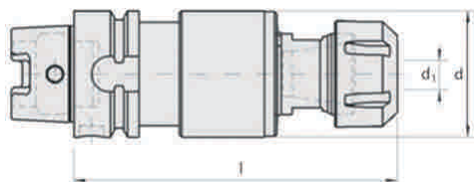
D1 (mm)	A (mm)	L1 (mm)	Range	Kühlmittelezufuhr Coolant Supply	N/W (Kg)	Bezeichnung Designation	Ident No.
50	104	116	1-16	Form "AD"	2.91	WNDC/16-104/HSK-A100	5056231

- kompakte Bauweise
- hohe Rundlaufgenauigkeit
- sichere Spannung durch selbsthemmendes Getriebe
- für Rechts- und Linkslauf geeignet

- compact design
- high run-out accuracy
- secure clamping due to self-locking gear
- suitable for clockwise and counter-clockwise operations

Pendelhalter (PN / HSK)
Floating chucks (PN / HSK)

Kegel-Hohlschaft DIN 69893A mit Kühlmitteldurchführung
Hollow taper shank DIN 69893A with internal coolant feed



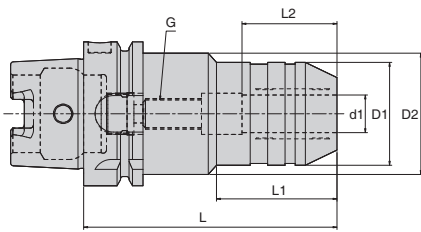
HSK-A63

Pendelweg Floating Range	d ₁ (mm)	d (mm)	l (mm)	Kühlmittelezufuhr Coolant Supply	N/W (Kg)	Bezeichnung Designation	Ident No.
+/-0,25	6-16	50	112	Form "A"	1,4	PN50-IK/HSK-A63-ESX25	6774212
+/-0,25	8-20	50	118	Form "A"	1,5	PN50-IK/HSK-A63-ESX32	6730237

- Lieferung ohne Spannzange und Dichtscheibe

- Delivery excludes collet and sealing washer

Hydrodehnspannfutter
Hydraulic Expansion Chucks



HSK-A63

D1 (mm)	D2 (mm)	D3 (mm)	D4 (mm)	L1	L2 max	L2 min	V	L3	L4	G	Kühlmittelzufuhr Coolant supply	Bezeichnung Designation	Ident No.
6	25	28	50	70	37.5	27.5	10	24	44	M5x0.8	Form A	WHEC/06-70/HSK-A63	5056135
8	27	30	50	70	37.5	27.5	10	24	44	M6x1.0	Form A	WHEC/08-70/HSK-A63	5056136
10	29	32	50	80	42.5	32.5	10	35	54	M8x1.0	Form A	WHEC/10-80/HSK-A63	5056137
12	31	34	50	85	47.5	37.5	10	40	59	M8x1.0	Form A	WHEC/12-85/HSK-A63	5056138
14	33	36	50	85	47.5	37.5	10	40	59	M8x1.0	Form A	WHEC/14-85/HSK-A63	5056139
16	35	38	50	90	52.5	42.5	10	46	64	M8x1.0	Form A	WHEC/16-90/HSK-A63	5056140
18	38	41	50	90	52.5	42.5	10	47	64	M8x1.0	Form A	WHEC/18-90/HSK-A63	5056141
20	40	43	50	90	52.5	42.5	10	48	64	M8x1.0	Form A	WHEC/20-90/HSK-A63	5056143
25	53	57	63	120	61.0	51.0	10	59	94	M16x1.0	Form A	WHEC/25-120/HSK-A63	5056146
32	60	63	75	125	65.0	55.0	10	63	99	M16x1.0	Form A	WHEC/32-125/HSK-A63	5056147

Ersatzteile und Zubehör / Spare Parts & Accessories : Pg.49

Pg.49

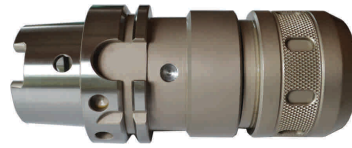
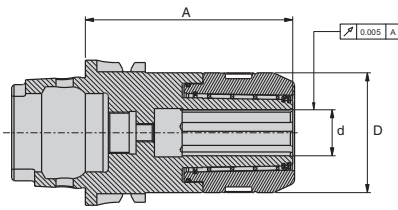
HSK-A100

D1 (mm)	D2 (mm)	D3 (mm)	D4 (mm)	L1	L2 max	L2 min	V	L3	L4	G	Kühlmittelzufuhr Coolant supply	Bezeichnung Designation	Ident No.
6	25	28	50	75	37.5	27.5	10	26	46	M5x0.8	Form A	WHEC/06-75/HSK-A100	5056148
8	27	30	50	75	37.5	27.5	10	26	46	M6x1.0	Form A	WHEC/08-75/HSK-A100	5056149
10	29	32	50	90	42.5	32.5	10	42	61	M8x1.0	Form A	WHEC/10-90/HSK-A100	5056153
12	31	34	50	95	47.5	37.5	10	47	66	M8x1.0	Form A	WHEC/12-95/HSK-A100	5056154
14	33	36	50	95	47.5	37.5	10	47	66	M8x1.0	Form A	WHEC/14-95/HSK-A100	5056155
16	35	38	50	100	52.5	42.5	10	53	71	M10x1.0	Form A	WHEC/16-100/HSK-A100	5056156
18	38	41	50	100	52.5	42.5	10	53	71	M10x1.0	Form A	WHEC/18-100/HSK-A100	5056157
20	40	43	50	105	52.5	42.5	10	59	76	M10x1.0	Form A	WHEC/20-105/HSK-A100	5056158
25	53	57	63	110	61.0	51.0	10	62	81	M16x1.0	Form A	WHEC/25-110/HSK-A100	5056159
32	60	63	75	110	65.0	56.0	10	62	81	M10x1.0	Form A	WHEC/32-110/HSK-A100	5056160

Ersatzteile und Zubehör / Spare Parts & Accessories : Pg.49

Pg.49

Hochleistungsfräserspannfutter
Hi-Power Milling Chuck



G6.3
15000
Limit
R.P.M.

HSK-A63

d (mm)	D (mm)	A (mm)	N/W (Kg)	Kühlmittelzufuhr Coolant supply	Bezeichnung Designation	Ident No.
20	52	90	1.6	Form 'AD//B'	WHPMC/20-90/HSK-A63	5056123
25	58	105	1.9	Form 'AD//B'	WHPMC/25-105/HSK-A63	5056125
32	66	135	2.8	Form 'AD//B'	WHPMC/32-135/HSK-A63	5056126

Ersatzteile und Zubehör / Spare Parts & Accessories :



Pg.48



Pg.48

HSK-A100

d (mm)	D (mm)	A (mm)	N/W (Kg)	Kühlmittelzufuhr Coolant supply	Bezeichnung Designation	Ident No.
20	52	100	3.0	Form 'AD//B'	WHPMC/20-100/HSK-A100	5058646
25	58	115	3.5	Form 'AD//B'	WHPMC/25-115/HSK-A100	5056129
32	66	135	4.2	Form 'AD//B'	WHPMC/32-135/HSK-A100	5056132

Ersatzteile und Zubehör / Spare Parts & Accessories :



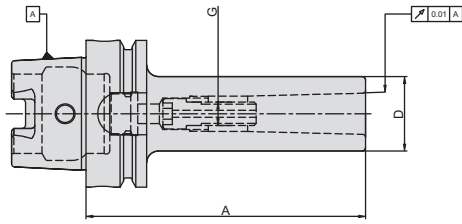
Pg.48



Pg.48

Refer page no.53 for more technical information

Aufnahmen für Morse-Kegel mit Anzugsgewinde DIN 6364 / 228A
Morse taper holder with thread DIN 6364 / 228A



G6.3
15000
Ummin.
R.P.M.

HSK-A63

MK	D (mm)	A (mm)	G	Kühlmittelezufuhr Coolant Supply	N/W (Kg)	Bezeichnung Designation	Ident No.
MT1	25	100	M6	Form "A"	1.5	WMTB/MT1-100/HSK-A63	4601750
MT2	32	120	M10	Form "A"	2.0	WMTB/MT2-120/HSK-A63	4601751
MT3	40	140	M12	Form "A"	2.2	WMTB/MT3-140/HSK-A63	4601752
MT4	48	160	M16	Form "A"	2.5	WMTB/MT4-160/HSK-A63	4601753

Ersatzteile und Zubehör / Spare Parts & Accessories :



Pg.46



Pg.45

G6.3
10000
Ummin.
R.P.M.

HSK-A100

MK	D (mm)	A (mm)	G	Kühlmittelezufuhr Coolant Supply	N/W (Kg)	Bezeichnung Designation	Ident No.
MT1	25	110	M6	Form "A"	2.4	WMTB/MT1-110/HSK-A100	4601652
MT2	32	120	M10	Form "A"	2.4	WMTB/MT2-120/HSK-A100	4601653
MT3	40	150	M12	Form "A"	3.0	WMTB/MT3-150/HSK-A100	4601654
MT4	48	170	M16	Form "A"	3.4	WMTB/MT4-170/HSK-A100	4601655
MT5	63	200	M20	Form "A"	4.5	WMTB/MT5-200/HSK-A100	4601656

Ersatzteile und Zubehör / Spare Parts & Accessories :



Pg.46

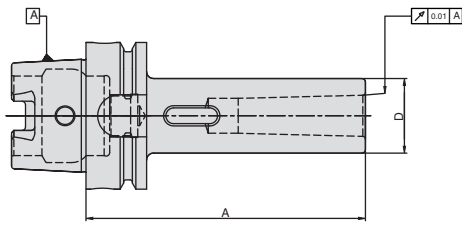


Pg.45

- Kühlmittelrohr bitte separat bestellen (Siehe Seite 47)
- Im Lieferumfang enthalten : eingebaute Innensechskantschraube

- Please order coolant tube separately (See page 47)
- Delivery includes : built-in draw screw

Aufnahmen für Morse-Kegel mit Austreibblappen DIN 6383
Morse taper holder with tang to DIN 6383



G6.3
10000
U/min
R.P.M.

HSK-A63

MK	D (mm)	A (mm)	Kühlmittelzufuhr Coolant Supply	N/W (Kg)	Bezeichnung Designation	Ident No.
MT1	25	100	Form "A"	1.5	WMTA/MT1-100/HSK-A63	4601746
MT2	32	120	Form "A"	2.0	WMTA/MT2-120/HSK-A63	4601747
MT3	40	140	Form "A"	2.2	WMTA/MT3-140/HSK-A63	4601748
MT4	48	160	Form "A"	2.5	WMTA/MT4-160/HSK-A63	4601749

G6.3
10000
U/min
R.P.M.

HSK-A100

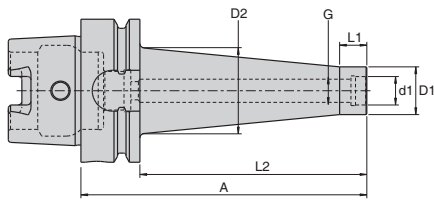
MK	D (mm)	A (mm)	Kühlmittelzufuhr Coolant Supply	N/W (Kg)	Bezeichnung Designation	Ident No.
MT1	25	110	Form "A"	3.4	WMTA/MT1-110/HSK-A100	4601647
MT2	32	120	Form "A"	3.8	WMTA/MT2-120/HSK-A100	4601648
MT3	40	150	Form "A"	4.0	WMTA/MT3-150/HSK-A100	4601649
MT4	48	170	Form "A"	4.6	WMTA/MT4-170/HSK-A100	4601650
MT5	63	200	Form "A"	5.2	WMTA/MT5-200/HSK-A100	4601651

• Kühlmittelrohr bitte separat bestellen (Siehe Seite 47)

• Please order coolant tube separately (See page 47)

Aufnahmen für Einschraubfräser
Chucks for threaded milling heads

G6.3
10000
U/min
R.P.M.



HSK-A63

d (mm)	D1 (mm)	D2 (mm)	A (mm)	L1 (mm)	L2 (mm)	G	Bezeichnung Designation	Ident No.
8.5	13.8	15	51	12	25	M8	WTA/M8-51/HSK-A63	5055783
8.5	13.8	23	76	12	50	M8	WTA/M8-76/HSK-A63	5055784
8.5	13.8	25	101	12	75	M8	WTA/M8-101/HSK-A63	5055785
10.5	18.0	23	51	12	25	M10	WTA/M10-51/HSK-A63	5055786
10.5	18.0	25	76	12	50	M10	WTA/M10-76/HSK-A63	5055787
10.5	18.0	35	126	12	100	M10	WTA/M10-126/HSK-A63	5055788
10.5	18.0	45	176	12	150	M10	WTA/M10-176/HSK-A63	5055789
12.5	21.0	24	51	12	25	M12	WTA/M12-51/HSK-A63	5055790
12.5	21.0	30	76	12	50	M12	WTA/M12-76/HSK-A63	5055791
12.5	21.0	38	126	12	100	M12	WTA/M12-126/HSK-A63	5055792
12.5	21.0	45	176	12	150	M12	WTA/M12-176/HSK-A63	5055793
17.0	29.0	29	51	12	25	M16	WTA/M16-51/HSK-A63	5055794
17.0	29.0	34	76	12	50	M16	WTA/M16-76/HSK-A63	5055795
17.0	29.0	40	126	12	100	M16	WTA/M16-126/HSK-A63	5055796
17.0	29.0	48	176	12	150	M16	WTA/M16-176/HSK-A63	5055797

G6.3
10000
U/min
R.P.M.

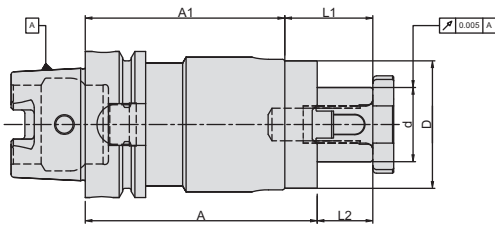
HSK-A100

d (mm)	D1 (mm)	D2 (mm)	A (mm)	L1 (mm)	L2 (mm)	G	Bezeichnung Designation	Ident No.
10.5	18.0	25	79	12	50	M10	WTA/M10-79/HSK-A100	5055798
10.5	18.0	35	129	12	100	M10	WTA/M10-129/HSK-A100	5055799
10.5	18.0	45	179	12	150	M10	WTA/M10-179/HSK-A100	5055800
12.5	21.0	30	79	12	50	M12	WTA/M12-79/HSK-A100	5055801
12.5	21.0	38	129	12	100	M12	WTA/M12-129/HSK-A100	5055802
12.5	21.0	45	179	12	150	M12	WTA/M12-179/HSK-A100	5055803
17.0	29.0	34	79	12	50	M16	WTA/M16-79/HSK-A100	5055804
17.0	29.0	40	129	12	100	M16	WTA/M16-129/HSK-A100	5055805
17.0	29.0	48	179	12	150	M16	WTA/M16-179/HSK-A100	5055806

Kombi – Aufsteckfräserdorne DIN 6358

Combi shell mill holder to DIN 6358

G6.3
15000
U/min
R.P.M.



HSK-A63

d (mm)	D (mm)	A (mm)	A1 (mm)	L1 (mm)	L2 (mm)	Kühlmittelezufuhr Coolant Supply	N/W (kg)	Bezeichnung Designation	Ident No.
16	32	60	50	27	17	Form "A"	1.0	WFSH/16-60/HSK-A63	4601754
22	40	60	48	31	19	Form "A"	1.0	WFSH/22-60/HSK-A63	4601756
27	48	60	48	33	21	Form "A"	1.2	WFSH/27-60/HSK-A63	4601758
32	53	60	46	38	24	Form "A"	1.4	WFSH/32-60/HSK-A63	4601760
40	70	70	56	41	27	Form "A"	1.8	WFSH/40-70/HSK-A63	4601762
16	32	100	90	27	17	Form "A"	1.4	WFSH/16-100/HSK-A63	4601755
22	40	100	88	31	19	Form "A"	1.49	WFSH/22-100/HSK-A63	4601757
27	48	100	88	33	21	Form "A"	1.81	WFSH/27-100/HSK-A63	4601759
32	58	100	86	38	24	Form "A"	2.5	WFSH/32-100/HSK-A63	4601761
40	70	100	86	41	27	Form "A"	2.8	WFSH/40-100/HSK-A63	5055763

Ersatzteile und Zubehör / Spare Parts & Accessories :



Pg.42



Pg.43



Pg.42

G6.3
10000
U/min
R.P.M.

HSK-A63

d (mm)	D (mm)	A (mm)	A1 (mm)	L1 (mm)	L2 (mm)	Kühlmittelezufuhr Coolant Supply	N/W (kg)	Bezeichnung Designation	Ident No.
16	32	160	150	27	17	Form "A"	2.5	WFSH/16-160/HSK-A63	5055764
22	40	160	148	31	19	Form "A"	2.6	WFSH/22-160/HSK-A63	5055765
27	48	160	148	33	21	Form "A"	2.8	WFSH/27-160/HSK-A63	5055766
32	58	160	146	38	24	Form "A"	3.3	WFSH/32-160/HSK-A63	5055767
40	70	160	146	41	27	Form "A"	3.5	WFSH/40-160/HSK-A63	5055772

Ersatzteile und Zubehör / Spare Parts & Accessories :



Pg.42



Pg.43



Pg.42

HSK-A100

d (mm)	D (mm)	A (mm)	A1 (mm)	L1 (mm)	L2 (mm)	Kühlmittelezufuhr Coolant Supply	N/W (kg)	Bezeichnung Designation	Ident No.
16	32	60	50	27	17	Form "A"	2.4	WFSH/16-60/HSK-A100	5055773
22	40	60	48	31	19	Form "A"	2.6	WFSH/22-60/HSK-A100	4601658
27	48	60	48	33	21	Form "A"	2.8	WFSH/27-60/HSK-A100	4601659
32	58	60	46	38	24	Form "A"	3.0	WFSH/32-60/HSK-A100	4601660
40	70	70	56	41	27	Form "A"	3.4	WFSH/40-70/HSK-A100	4601661

Ersatzteile und Zubehör / Spare Parts & Accessories :



Pg.42



Pg.43

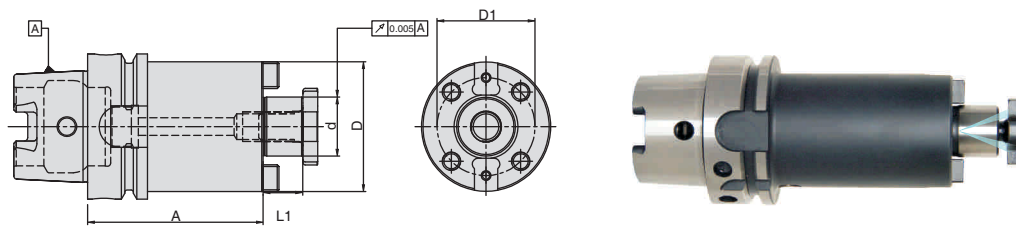


Pg.42

- Kühlmittelrohr bitte separat bestellen (Siehe Seite 47)
- Im Lieferumfang enthalten : Passfeder, Mitnehmerring und Fräseranzugsschraube

- Please order coolant tube separately (See page 47)
- Delivery includes : Parallel key, drive ring and clamping screw

Messerkopf-Aufnahme DIN 6357 mit vergrößertem Bunddurchmesser
Face mill holder to DIN 6357 for cutters with drive key



G2.5
15000
U/min
R.P.M.

Feingewuchtete Aufnahme
Fine balanced holders

HSK-A63

d (mm)	D (mm)	A (mm)	L1 (mm)	L2 (mm)	Kühlmittelzufuhr Coolant Supply	N/W (kg)	Bezeichnung Designation	Ident No.
16	38	50	17		Form "AD"	1.1	WSMH/16-50/HSK-A63	4601763
22	48	50	19		Form "AD"	1.1	WSMH/22-50/HSK-A63	4601765
27	58	60	21		Form "AD"	1.3	WSMH/27-60/HSK-A63	4601767
32	78	60	24		Form "AD"	1.4	WSMH/32-60/HSK-A63	4601769
40	88	60	27	66.7	Form "AD"	1.9	WSMH/40-60/HSK-A63+	4601771
16	38	100	17		Form "AD"	1.4	WSMH/16-100/HSK-A63	4601764
22	48	100	19		Form "AD"	1.8	WSMH/22-100/HSK-A63	4601766
27	58	100	21		Form "AD"	2.0	WSMH/27-100/HSK-A63	4601768
32	78	100	24		Form "AD"	2.6	WSMH/32-100/HSK-A63	4601770
40	88	100	27	66.7	Form "AD"	3.1	WSMH/40-100/HSK-A63+	4601772

Ersatzteile und Zubehör / Spare Parts & Accessories :



Pg.42



Pg.42



Pg.43

HSK-A100

d (mm)	D (mm)	A (mm)	L1 (mm)	L2 (mm)	Kühlmittelzufuhr Coolant Supply	N/W (kg)	Bezeichnung Designation	Ident No.
16	38	50	17		Form "AD"	2.3	WSMH/16-50/HSK-A100	5056120
22	48	50	19		Form "AD"	2.5	WSMH/22-50/HSK-A100	4601663
27	58	50	21		Form "AD"	2.7	WSMH/27-50/HSK-A100	4601664
32	78	50	24		Form "AD"	2.8	WSMH/32-50/HSK-A100	4601665
40	88	60	27	66.7	Form "AD"	3.8	WSMH/40-60/HSK-A100+	4601666
60	129	70	40	101.6	Form "AD"	6.0	WSMH/60-70/HSK-A100+	5056122

Ersatzteile und Zubehör / Spare Parts & Accessories :



Pg.42



Pg.42

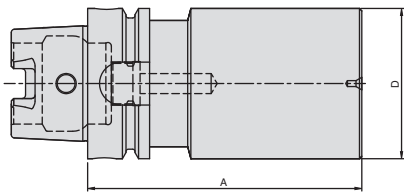


Pg.43

- Kühlbohrung an der Stirnseite Standard bei allen Grundhaltern
- +D = Ø 40, D = Ø 60 Mit 4 zusätzlichen Gewindebohrungen nach DIN 2079
- Kühlmittelrohr bitte separat bestellen (Siehe Seite 47)
- Im Lieferumfang enthalten : Mitnehmersteine und Fräseranzugsschraube

- Coolant bore on the pilot face (holder with Form "AD") as standard for all holders
- +D = Ø 40, D = Ø 60 With additional 4 screw holes to DIN 2079
- Please order coolant tube separately (See page 47)
- Delivery includes : Drive keys and clamping screw

Bohrstangenrohlinge
Boring bar blanks



HSK-A63

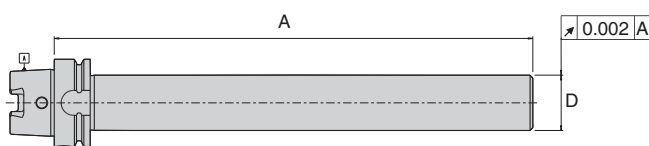
D (mm)	A (mm)	Kühlmittelezufuhr Coolant Supply	N/W (kg)	Bezeichnung Designation	Ident No.
63	200	Form "A"	4.8	WBBB/63-200/HSK-A63	5056270
80	250	Form "A"	9.0	WBBB/80-250/HSK-A63	5056271

HSK-A100

D (mm)	A (mm)	Kühlmittelezufuhr Coolant Supply	N/W (kg)	Bezeichnung Designation	Ident No.
63.0	200	Form "A"	6.2	WBBB/63-200/HSK-A100	5056272
80.0	250	Form "A"	9.1	WBBB/80-250/HSK-A100	5056273
97.5	250	Form "A"	15.0	WBBB/97.5-250/HSK-A100	5056274

- Kühlmittelrohr bitte separat bestellen (Siehe Seite 47)
- Im Lieferumfang enthalten : Steilkegel und Bund gehärtet und geschliffen, Schaft weich zur weiteren Bearbeitung.
- Please order coolant tube separately (See page 47)
- Delivery includes : Steep taper and flange hardened, body left soft.

Kontrolldorn
Test Arbor



HSK-A63

D (mm)	A (mm)	Kühlmittelezufuhr Coolant Supply	N/W (Kg)	Bezeichnung Designation	Ident No.
40	346	Nil	3.0	WTMM/40-346/HSK-A63	5056275

HSK-A100

D (mm)	A (mm)	Kühlmittelezufuhr Coolant Supply	N/W (Kg)	Bezeichnung Designation	Ident No.
50	349	Nil	6.3	WTMM/50-349/HSK-A100	5056276

- Diese Dorne haben keinen Bund.
- Kontrolldorne im Holzkasten geliefert.
- These gauge are without flange.
- Delivered in wooden box.

DIN 69893 (HSK-E) Werkzeugaufnahmen
DIN 69893 (HSK-E) Tool Holders**Spannzangenfutter ER ***

Collet chuck ER *

Fräseraufnahmen (Weldon) *

End mill holder (Weldon) *

Hydrodehnspannfutter *

Hydraulic expansion chucks *

Kombi-Aufsteckfräserdorne *

Combi shell mill holder *

Messerkopf-Aufnahmen *

Face mill holder *

Bohrstangenrohlinge *

Boring bar blanks *

Kontrolldorne *

Test Arbors *

* Die oben genannten Produkte sind nicht lagerhaltig und können auf Anfrage angeboten werden

* The above mentioned products are not stock articles and can be offered upon request

DIN JIS B 6339 (MAS 403 BT) Werkzeugaufnahmen **DIN JIS B 6339 (MAS 403 BT) Tool Holders**

Spannzangenfutter ER *

Collet chuck ER *

Fräseraufnahmen (Weldon) *

End mill holder (Weldon) *

Fräseraufnahmen (Whistle Notch) *

End mill holder (Whistle Notch) *

Aufnahmen für Morse-Kegel mit Anzugsgewinde *

Morse taper holder with thread *

Aufnahmen für Morse-Kegel mit Austreiblappen *

Morse taper holder with tang *

Kombi-Aufsteckfräserdorne *

Combi shell mill holder *

Messerkopf-Aufnahmen *

Face mill holder *

Reduzierhülsen *

Reduction Sleeves *

Bohrstangenrohlinge *

Boring bar blanks *

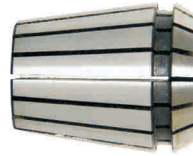
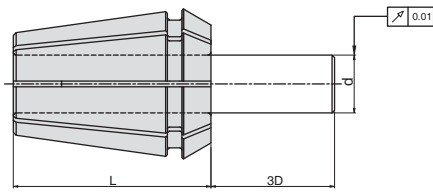
* **Die oben genannten Produkte sind nicht lagerhaltig und können auf Anfrage angeboten werden**

* The above mentioned products are not stock articles and can be offered upon request

Zubehör
Accessories

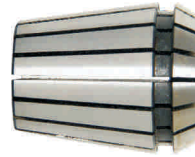
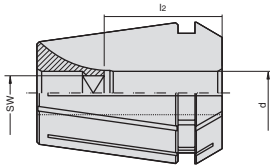
Spannzangen	
Collets	37-38
<hr/>	
Spannmuttern	
Clamping nuts	39
<hr/>	
Dichtscheiben	
Sealing discs	40
<hr/>	
Anzugsbolzen	
Pull studs	41
<hr/>	
Weiteres Zubehör	
Other Accessories	41-49
<hr/>	

Spannzangen DIN 6499 System ER
Collets DIN 6499 ER-System



Spannbereich Clamping Range d (mm)	4008E ER 11-... d=11.5, L=18mm (1.0-7.0) Ident No.	426E ER 16-... d=17, L=27mm (1.0-10.0) Ident No.	ER 20-... d=21, L=31mm (1.0-13.0) Ident No.	430E ER 25-... d=26, L=35mm (2.0-16.0) Ident No.	470E ER 32-... d=33, L=40mm (2.0-20.0) Ident No.	472E ER 40-... d=41, L=46mm (3.0-26.0) Ident No.
1.0-0.5(1/32")	5056179	5057132	5056197			
2.0-1.0(1/16")	5056181	5057134	5057149	5056198	5056200	
3.0-2.0	5056182	5057135	5057151	5057171	5057226	5056211
4.0-3.0(5/32")	5056184	5057136	5057152	5057172	5057228	5057255
5.0-4.0(3/16")	5056187	5057137	5057159	5057173	5057229	5057257
6.0-5.0(7/32")	5056189	5057138	5057160	5057174	5057230	5057259
7.0-6.0	5056191	5057141	5057161	5057175	5057232	5057260
8.0-7.0(5/16")		5057144	5057163	5057176	5057234	5057261
9.0-8.0(11/32")		5057145	5057164	5057178	5057235	5057263
10.0-9.0		5057146	5057166	5057179	5057237	5057264
11.0-10.0			5057168	5057181	5057238	5057265
12.0-11.0(15/32")			5057169	5057182	5057239	5057266
13.0-12.0(1/2")			5057170	5057183	5057240	5057267
14.0-13.0				5057184	5057241	5057268
15.0-14.0				5057185	5057245	5057269
16.0-15.0(5/8")				5057186	5057247	5057270
17.0-16.0(21/32")					5057248	5057271
18.0-17.0					5057249	5057273
19.0-18.0					5057250	5057274
20.0-19.0(25/32")					5057251	5057275
21.0-20.0(13/16")						5057276
22.0-21.0						5057277
23.0-22.0						5057284
24.0-23.0(15/16")						5057285
25.0-24.0(31/32")						5057286
26.0-25.0						5057287

ESX ... GB Spannzange mit Innenvierkant
 ESX ... GB collet with internal square



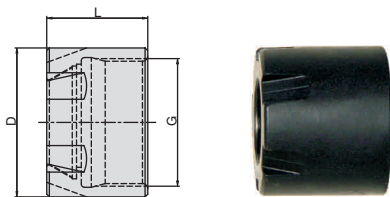
d x SW	l ₂		ESX 12 GB Id. No.	ESX 16 GB Id. No.	ESX 20 GB Id. No.	ESX 25 GB Id. No.	ESX 32 GB Id. No.	ESX 40 GB Id. No.
2,8x2,1	12	DIN						
3,5x2,7	14	DIN	5055115					
4,0x3,0	14	DIN						
4,0x3,15/3,2	18	ISO,JIS	5020195	6954588	6949762		6950665	
4,5x3,4	14/18	DIN	5020217	6951393	6948389	6951218	6952585	
5,0x4,0	18	ISO,JIS	5020218	6954872	6949763			
5,5x4,3	18	DIN		6954656	6949764			
5,5x4,5	18	JIS		6952288	6949765			
6,0x4,5	14/18	JIS		6952289	6949766		6953220	
6,0x4,9	18	DIN	6950826	6951392	6948390	6951544	6949997	
6,2x5,0	18	JIS						
6,3x5,0	18	ISO		6946901	6951397	6951217	6946964	
7,0x5,5	18	DIN,JIS		6947340	6949767	6951797	6950029	
7,1x5,6	18	ISO			6953228		6950029	
8,0x6,2/6,3	18	DIN,JIS		6946213	6949202	6951214	6949769	6955396
8,5x6,5	22	JIS			6949768	6954875	6953221	
9,0x7,0/7,1	22	DIN,ISO		6947393	6947338	6951216	6946965	6955397
10,0x8,0	22	DIN,ISO		6951396	6949111	6951215	6949998	9080012
10,5x8,0	25	JIS			6953229	6954876	6952835	
11,0x9,0	25	DIN			6949177	6946167	6946104	6955398
11,2x9,0	25	ISO			6949353	6951551	6951219	
12,0x9,0	25	DIN				6950343	6946106	9074741
12,5x10,0	25	ISO,JIS				6951398	6951553	6951493
14,0x11,0/11,2	25	DIN,ISO,JIS				6951559	6947337	9074742
15,0x12,0	25	JIS					6953222	
16,0x12,0	25	DIN				6951399	6948391	9080073
16,0x12,5	25	JIS				6947689	6952722	
17,0x13,0	25	JIS						
18,0x14,0/14,5	25	DIN,ISO					6950206	6952207
20,0x16,0	28	DIN,ISO					6948392	6948903
22,0x18,0	28	DIN						6949124

Spannmutter ER DIN 6499 Standardausführung mit Exzenterring gewuchtet
Clamping nut ER to DIN 6499-balanced



Abmessung Size	D	L	G	Bild Fig	Bezeichnung Designation	Ident No.
1-10	28	17.5	M22X1.5	1	ER16 - DIN 6499	4600340
1-13	34	19.0	M25X1.5	1	ER20 - DIN 6499	5056874
2-16	42	20.0	M32X1.5	2	ER25 - DIN 6499	4600341
2-20	50	22.5	M40X1.5	2	ER32 - DIN 6499	4600342
3-36	63	25.5	M50x1.5	2	ER40 - DIN 6499	4600343

Spannmutter "Mini" ER
Clamping nut "Mini" ER



Abmessung Size	D	L	G	Bezeichnung Designation	Ident No.
1-7	16.0	11.3	M13X0.75	ER11M / EX11-MC	5033469
1-10	22.0	17.0	M19X1.0	ER16M / EX16-MC	6944416
1-13	28.0	19.0	M24x1.0	ER20M / EX20-MC	6951224
2-16	35.0	20.0	M30X1.0	ER25M / EX25-MC	6955533

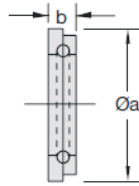
Spannmutter ER für Dichtscheiben
Clamping nut ER for sealing discs



Abmessung Size	D	L	G	Bild Fig	Bezeichnung Designation	Ident No.
1-10	28.0	22.5	M22X1.5	1	ER16-IC / EX16-MC	6931372
1-13	34.0	24.0	M25X1.5	1	ER20-IC / EX20-MC	6931227
2-16	42.0	25.0	M32X1.5	2	ER25-IC / EX25-MC	6941678
2-20	50.0	27.5	M40X1.5	2	ER32-IC / EX32-MC	6933897
3-36	63.0	30.5	M50x1.5	2	ER40-IC / EX40-MC	6948425

DS/ER Dichtscheiben für ER/ESX-Spannzange DIN6499-B

DS/ER Sealing disc for ER/ESX collet DIN6499-B

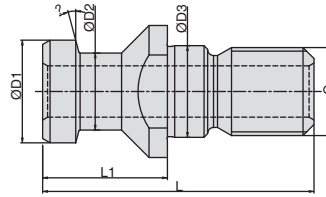


Dichtebereich Sealing range mm	Id. No. DS/ER 16 (bxa) 4x13 mm	Id. No. DS/ER 20 (bxa) 4x16 mm	Id. No. DS/ER 25 (bxa) 4x21 mm	Id. No. DS/ER 32 (bxa) 4x27 mm	Id. No. DS/ER 40 (bxa) 4x33,5 mm
3.0-2.5	6953629	6954178	6954181	6954194	6954264
3.5-3.0	6954176	6948385	6947674	6954195	6954265
4.0-3.5	6952696	6953235	6954182	6954112	6954266
4.5-4.0	6944324	6948386	6954183	6954196	6954267
5.0-4.5	6952972	6953236	6954184	6954113	6954268
5.5-5.0	6954177	6952104	6954185	6954197	6954269
6.0-5.5	6931371	6943901	6953215	6948674	6954270
6.5-6.0	6943060	6953031	6954186	6954198	6954271
7.0-6.5	6940533	6950178	6943420	6953637	6954272
7.5-7.0	6952195	6953237	6943421	6954199	6954273
8.0-7.5	6941539	6946991	6943419	6949999	6952197
8.5-8.0	6946898	6953238	6952198	6954200	6954274
9.0-8.5	6941992	6947339	6941679	6949298	6954275
9.5-9.0	6946897	6954179	6946744	6954201	6954276
10.0-9.5	6942300	6931347	6943423	6948675	6952199
10.5-10.0		6952196	6954187	6952918	6954277
11.0-10.5		6944294	6943534	6948387	6954278
11.5-11.0		6953239	6954188	6951274	6954279
12.0-11.5		6943902	6943424	6946689	6954280
12.5-12.0		6954180	6954189	6951275	6954281
13.0-12.5		6947968	6948123	6952973	6954282
13.5-13.0			6954190	6954202	6954283
14.0-13.5			6943342	6946613	6954284
14.5-14.0			6954191	6954203	6954285
15.0-14.5			6954192	6954204	6954114
15.5-15.0			6954193	6954205	6954286
16.0-15.5			6943422	6946822	6946054
16.5-16.0				6954206	6954287
17.0-16.5				6954207	6954288
17.5-17.0				6954208	6954289
18.0-17.5				6946002	6946120
18.5-18.0				6954209	6952210
19.0-18.5				6954210	6954115
19.5-19.0				6954211	6954290
20.0-19.5				6933868	6952971
20.5-20.0					6954291
21.0-20.5					9071745
21.5-21.0					6954292
22.0-21.5					6949887
22.5-22.0					6952212
23.0-22.5					9071747
23.5-23.0					6954293
24.0-23.5					9071748
24.5-24.0					6954294
25.0-24.5					6948426
25.5-25.0					6954295
26.0-25.5					9072720

Anzugsbolzen DIN 69872 A+B

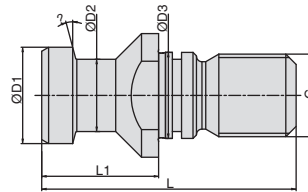
Pull stud DIN 69872 A+B

Type A (Mit Durchgangsbohrung, ohne O-Ring)
Type A (With through hole, without O-ring)



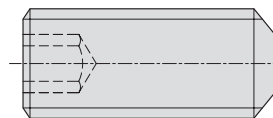
G	Ø D 1 (mm)	Ø D 2 (mm)	Ø D 3 (mm)	L (mm)	L1 (mm)	θ	Bezeichnung Designation	Ident No.
M 16	19.0	14.0	17.0	54.0	26.0	15°	BN 164 - SK 40	6733615
M 24	28.0	21.0	25.0	74.0	34.0	15°	BN 164 - SK 50	6733616

Type B (Ohne Durchgangsbohrung inkl. O-Ring)
Type B (without through hole, incl. O-ring)



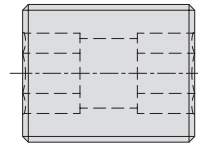
G	Ø D 1 (mm)	Ø D 2 (mm)	Ø D 3 (mm)	L (mm)	L1 (mm)	θ	Bezeichnung Designation	Ident No.
M 16	19.0	14.0	17.0	54.0	26.0	15°	BN 164B - SK 40	5056290
M 24	28.0	21.0	25.0	74.0	34.0	15°	BN 164B - SK 50	5056292

Spannschraube für Weldon und Whistle Notch Spannfüter DIN 1835 B
Locking screw for Weldon & Whistle Notch to DIN 1835 B



d (mm) (für Größe) (for Size)	Bezeichnung Designation	Ident No.
16	M 14 X 14 DIN 1835	5056294
20	M 16 X 12 DIN 1835	5056295
25 & 32	M 16 X 1 X 10.5	5056296
25	M 16 X 1 X 8.5	5056297
32	M 20 X 2 X 16 DIN 1835	5056298
6	M 6 X 10 DIN 1835	6919658
8	M 8 X 10 DIN 1835	6919659
10	M 10 X 12 DIN 1835	6919660
12 & 14	M 12 X 16 DIN 1835	6919661
16 & 18	M 14 X 16 DIN 1835	6919662
20	M 16 X 16 DIN 1835	6924584
25	M 18 X 2 X 20 DIN 1835	6919664
32 & 40	M 20 X 2 X 20 DIN 1835	6919665

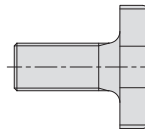
Anschlagschraube durchbohrt für Whistle Notch Aufnahmen
 Adjusting screw with coolant hole for Whistle Notch holder



d (mm) (für Größe) (for Size)	Bezeichnung Designation	Ident No.
6	M5 x 15	5056887
8	M6 x 15	5056888
10	M8 x 15	5056889
12 & 14	M10 x 15	5056891
16 & 18	M12 x 15	5056893
20	M16 x 15	5056894
25 & 32	M20 x 15	5056895

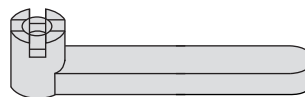
Ersatzteile für Kombi und Aufsteckfräserdorne
 Spare parts for Combi & Shell mill holder

Fräseranzugsschraube DIN 6367
 Clamping screw to DIN 6367



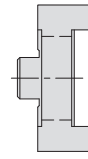
d (mm) (für Größe) (for Size)	Bezeichnung Designation	Ident No.
16	DIN 6367 - M 8 x 16	6934073
22	DIN 6367 - M 10 x 22	6940383
27	DIN 6367 - M 12 x 27	6941541
32	DIN 6367 - M 16 x 32	6942757
40	DIN 6367 - M 20 x 40	6943111

Spannschlüssel DIN 6368
 Spanner to DIN 6368



d (mm) (für Größe) (for Size)	Bezeichnung Designation	Ident No.
16	DIN6368 - 16	5056946
22	DIN6368 - 22	6942963
27	DIN6368 - 27	6942916
32	DIN6368 - 32	6942963
40	DIN6368 - 40	6950689

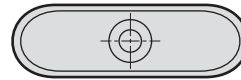
Mitnehmerring DIN 6366
Drive ring to DIN 6366



d (mm) (für Größe) (for Size)	Bezeichnung Designation	Ident No.
16	DIN 6366 - 16	5056898
22	DIN 6366 - 22	5056900
27	DIN 6366 - 27	5056901
32	DIN 6366 - 32	5056903
40	DIN 6366 - 40	5056904

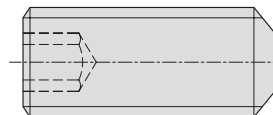
Ersatzteile für Kombi und Aufsteckfräserdorne
Spare parts for Combi & shell mill holder

Passfeder DIN 6885
Parallel key to DIN 6885



d (mm) (für Größe) (for Size)	Bezeichnung Designation	Ident No.
16	DIN 6885 - C 4 X 4 X 20	5056905
22	DIN 6885 - C 6 X 6 X 25	5056909
27	DIN 6885 - C 7 X 7 X 25	5056610
32	DIN 6885 - C 8 X 7 X 28	5056911
40	DIN 6885 - C 10 X 8 X 32	5056912

Gewindestift DIN 913
Threaded stud to DIN 913



d (mm) (für Größe) (for Size)	Bezeichnung Designation	Ident No.
16	DIN 913 - M 3 X 3	6914425
22, 27, 32	DIN 913 - M 3 X 5	6951794
40	DIN 913 - M 3 X 7	5056913

Spannschlüssel
Wrench

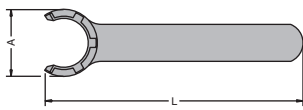


Bild A
Fig. A

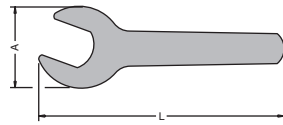


Bild B
Fig. B

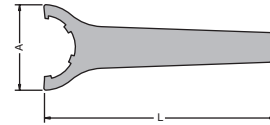
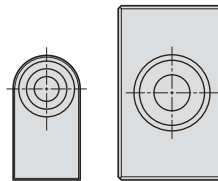


Bild C
Fig. C

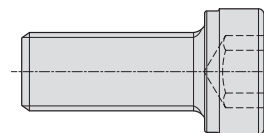
Bezeichnung Designation	A (mm)	L (mm)	Bild Fig	Ident No.
11M	16,8	90,0	A	6942650
DIN894-17	32,0	95,0	B	6927729
16M	22,5	110,0	A	6932510
DIN894-25	42,0	140,0	B	6927733
20M	29,0	120,0	A	6934089
DIN894-30	60,0	135,0	B	6934034
25	65,0	210,0	C	6921608
32	75,0	250,0	C	6921609
40	90,0	290,0	C	6921610
50	110,0	350,0	C	6951711

Paßfeder
Drive keys



d (mm) (für Größe) (for Size)	Bezeichnung Designation	Ident No.
16	Dia 16 - 8x8x14	5057289
22	Dia 22 - 10x10x17	5057290
27	Dia 27 - 12x14x20	5057291
32	Dia 32 - 14x14x22	5057293
40	Dia 40 - 15.9x16x21	5057294
60	Dia 60 - 25.4x25x31	5057295

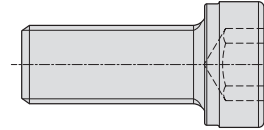
Innensechskantschraube DIN 912
Socket head screw to DIN 912



d (mm) (für Größe) (for Size)	Bezeichnung Designation	Ident No.
16	DIN 912 - M 3 x 8	6914489
22	DIN 912 - M 4 X 8	6918335
27	DIN 912 - M 4 X 14	6941122
32	DIN 912 - M 5 X 13	5056916
40	DIN 912 - M 6 X 16	6900224
60	DIN 912 - M 12 X 25	6914503

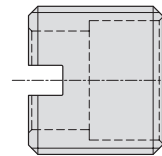
Ersatzteile für Morse-Kegel mit Anzugsgewinde
Spare Parts for Morse taper with thread

Innensechskantschraube
Socket Head Screw



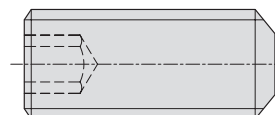
Kegelgröße Taper Size (SK/BT/ISO)	MK	Bezeichnung Designation	Ident No.
40 & 50	1	DIN 912 - M6 x 21	5056917
	2	DIN 912 - M10 x 30	6933092
	3	DIN 912 - M12 x 40	6918327
	4	DIN 912 - M16 x 40	6924372
	5	DIN 912 - M20 x 60	5056918

Rückschlagschraube
Stopper Screw



Kegelgröße Taper Size (SK/BT/ISO)	MK	Bezeichnung Designation	Ident No.
40 & 50	1	M16 x 10	5057297
	2	M16 x 8	5057299
	3	M20 x 1.5 x 10	5057300
	4	M26 x 1.5 x 10	5057301
	5	M36 x 2.5 x 15	5057305

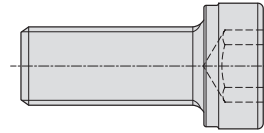
Gewindestift DIN 913
Threaded stud DIN 913



Kegelgröße Taper Size (SK/BT/ISO)	MK	Bezeichnung Designation	Ident No.
40 & 50	1	DIN 913 - M 5 x 6	6900216
	2	DIN 913 - M 5 x 6	6900216
	3	DIN 913 - M 5 x 6	6900216
	4	DIN 913 - M 5 x 6	6900216
	5	DIN 913 - M 5 x 6	6900216

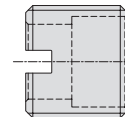
Ersatzteile für Zwischenhülsen
Spare Parts for Reduction Sleeves

Innensechskantschraube
Socket Head Screw



Kegelgröße Taper Size (SK/BT)	Innenkegelgröße Inside Taper	Bezeichnung Designation	Ident No.
SK40/BT40	SK 30	DIN 912 - M 12 x 40	6918327
SK50/BT50	SK 40	DIN 913 - M 16 x 60	6929756
SK50/BT50	SK 50	DIN 913 - M 24 x 80	5056920

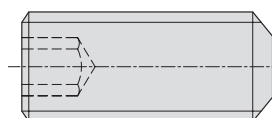
Rückschlagschraube
Stopper Screw



Kegelgröße Taper Size (SK/BT/ISO)	Innenkegelgröße Inside Taper	Bezeichnung Designation	Ident No.
40	30	M18x1.5x10	5057303
	40	M26x1.5x13	5057304
50	40	M26x1.5x13	5057304
	50	M36x2.0x15	5057305

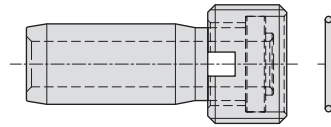
Kegelgröße Taper Size (HSK)	MK	Bezeichnung Designation	Ident No.
A63 & A100	1	M10x1.0-LHx6	5059807
	2	M15x1.5-LHx6	5059811
	3	M20x1.5-LHx6	5059812
	4	M24x1.5-LHx8.5	5059813
	5	M26x2.0-LHx11	5059814

Gewindestift DIN 913
Threaded Stud DIN 913



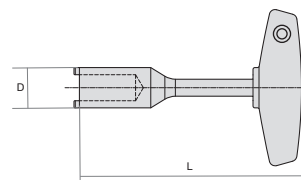
Bezeichnung Designation (SK/BT/ISO)	Ident No.
DIN 913 - M 5 X 6	6900216

Kühlmittelrohr für HSK-Spannfutter Zur Kühlmittelübergabe bei HSK-Werkzeugen inkl. Runddichtung DIN 3770 und Überwurfmutter
 Coolant tube for HSK chuck For coolant transfer for HSK tools incl. round gasket DIN 3770 and union nut



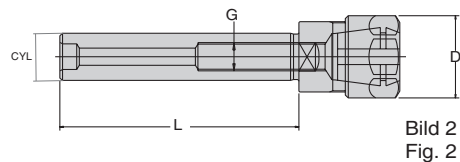
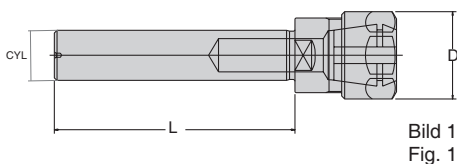
HSK-Größen HSK Size	Bezeichnung Designation	Ident No.
HSK 32	HSK 32 - 10	6934476
HSK 40	HSK 40 - 12	6934477
HSK 50	HSK 50 - 16	6934309
HSK 63	HSK 63 - 18	6934094
HSK 80	HSK 80 - 20	6943611
HSK 100	HSK 100 - 24	6934224

Montageschlüssel für Kühlmittelrohr
 Installation wrench for coolant pipe



HSK-Größen HSK Size	D (mm)	L (mm)	Ident No.
HSK 32	8.5	115	6738740
HSK 40	10.5	115	6738741
HSK 50	14.5	115	6738442
HSK 63	16.5	136	6738421
HSK 80	18.5	136	6738095
HSK 100	22	136	6738303

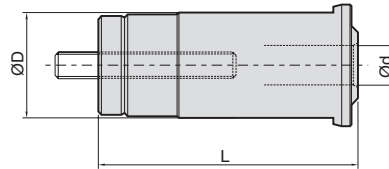
Spannzangenfutter Typ ER Zylinderschaft
 Collet chuck Type ER With Cylinder Shank



Abmessung Size	Spannzange Collet Type	Bereich Range	D (mm)	L (mm)	G	Bild Fig	Kühlmittelzufuhr Coolant supply	Bezeichnung Designation	Ident No.
CYL 8	ER 11	1-7	16	56		1	Form "A"	WCCH/ER11M-56/CYL8	5056876
CYL 10	ER 16	1-10	22	60		1	Form "A"	WCCH/ER16M-60/CYL10	5056879
CYL 12	ER 11	1-7	16	80		1	Form "A"	WCCH/ER11M-80/CYL12	5056880
CYL 16	ER 11	1-7	16	100	M 6	2	Form "AD"	WCCH/ER11M-100/CYL16	5056881
CYL 16	ER 16	1-10	22	60	M 8	2	Form "AD"	WCCH/ER16M-60/CYL16	5056882
CYL 16	ER 20	1-13	28	100	M 8	2	Form "AD"	WCCH/ER20M-100/CYL16	5056884
CYL 20	ER 16	1-10	22	100	M 10	2	Form "AD"	WCCH/ER16M-100/CYL20	5056885

Ersatzteile für Hochleistungsfräserspannfutter
Spare Parts for Hi-power milling chucks

Zylindrische Spannzange mit Längennachstellung
Adjustable Straight Collet



D (mm)	d (mm)	L (mm)	N/W (kg)	Bezeichnung Designation	Ident No.
20	6	65	0.15	WSC 20-06	5056814
20	8	65	0.15	WSC 20-08	5056817
20	10	65	0.15	WSC 20-10	5056818
20	12	65	0.15	WSC 20-12	5056819
20	16	65	0.15	WSC 20-16	5056820
25	6	73	0.15	WSC 25-06	5056821
25	8	73	0.15	WSC 25-08	5056822
25	10	73	0.15	WSC 25-10	5056823
25	12	73	0.15	WSC 25-12	5056824
25	16	73	0.15	WSC 25-16	5056825
25	18	73	0.15	WSC 25-18	5056827
25	20	73	0.15	WSC 25-20	5056828
32	6	79	0.35	WSC 32-06	5056829
32	8	79	0.35	WSC 32-08	5056830
32	10	79	0.35	WSC 32-10	5056831
32	12	79	0.35	WSC 32-12	5056832
32	16	79	0.35	WSC 32-16	5056833
32	18	79	0.35	WSC 32-18	5056834
32	20	79	0.35	WSC 32-20	5056835
32	25	79	0.35	WSC 32-25	5056836

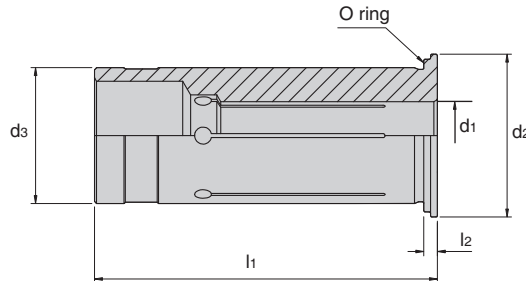
Spannschlüssel
Wrench



(For size)	N/W (kg)	Bezeichnung Designation	Ident No.
WHPMC 20	0.15	C-20	5056838
WHPMC 25	0.15	C-25	5056839
WHPMC 32	0.30	C-32	5056840

Ersatzteile für Hydrodehnspannfutter
Spare Parts for Hydraulic expansion chuck

Reduzierbuchsen HGR
Reduction sleeves HGR



d1 (mm)	d2 (mm)	d3 (mm)	l1 (mm)	l2 (mm)	Innere Kühlmittelzufuhr Internal coolant supply	Ident No.
3	19	12	45	2	HGR12D-3	9142752
4	19	12	45	2	HGR12D-4	9142753
5	19	12	45	2	HGR12D-5	9142754
6	19	12	45	2	HGR12D-6	9142755
8	19	12	45	2	HGR12D-8	9142756
3	29	20	50,5	2	HGR20D-3	9142758
4	29	20	50,5	2	HGR20D-4	9142779
5	29	20	50,5	2	HGR20D-5	9142780
6	29	20	50,5	2	HGR20D-6	9142781
7	29	20	50,5	2	HGR20D-7	9142782
8	29	20	50,5	2	HGR20D-8	9142784
9	29	20	50,5	2	HGR20D-9	9142785
10	29	20	50,5	2	HGR20D-10	9142786
11	29	20	50,5	2	HGR20D-11	9142787
12	29	20	50,5	2	HGR20D-12	9142788
13	29	20	50,5	2	HGR20D-13	9142799
14	29	20	50,5	2	HGR20D-14	9142800
15	29	20	50,5	2	HGR20D-15	9142801
16	29	20	50,5	2	HGR20D-16	9142802
6	39	32	60,5	3	HGR32D-6	9142804
10	39	32	60,5	3	HGR32D-10	9142809
12	39	32	60,5	3	HGR32D-12	9142810
14	39	32	60,5	3	HGR32D-14	9142811
16	39	32	60,5	3	HGR32D-16	9142812
18	39	32	60,5	3	HGR32D-18	9142813
20	39	32	60,5	3	HGR32D-20	9142814
25	39	32	60,5	3	HGR32D-25	9142815

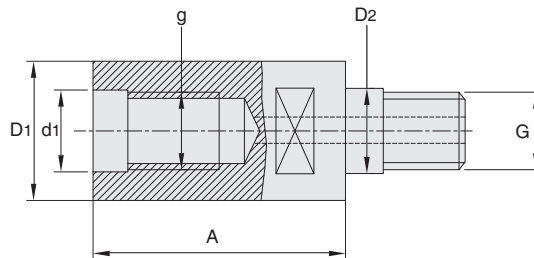
Ausziehwerkzeug für Reduzierbuchsen HGR/WZ
Sleeve remover HGR/WZ



T - Wrench	Ident No.
HGR/WZ	9142854

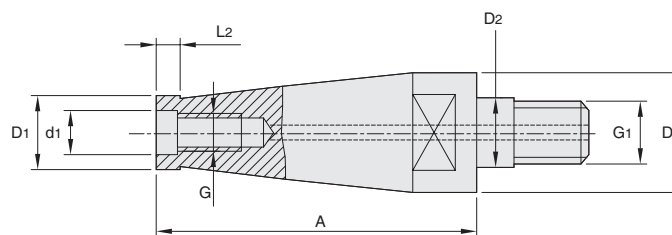
Ersatzteile für Aufnahmen - Einschraubfräser
Spare Parts for Chucks - Threaded milling heads

Einschraubfräser Verlängerung
Threaded arbor extensions



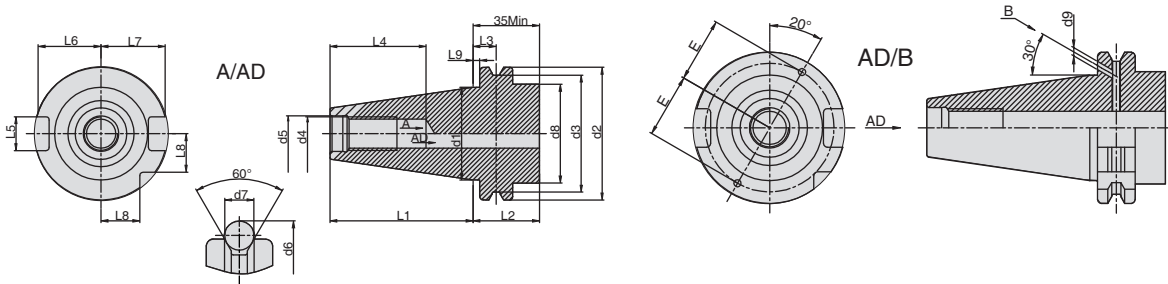
g / G (mm)	d1 / D2 (mm)	A (mm)	D1 (mm)	Bezeichnung Designation	Ident No.
M8	8.5	40	13,8	WTA/M8-40/M8	66653401M
M8	8.5	60	13,8	WTA/M8-60/M8	66653402M
M10	10.5	40	18,0	WTA/M10-40/M10	66653403M
M10	10.5	60	18,0	WTA/M10-60/M10	66653404M
M12	12.5	40	21,0	WTA/M12-40/M12	66653405M
M12	12.5	60	21,0	WTA/M12-60/M12	66653406M
M16	17.0	40	29,0	WTA/M16-40/M16	66653407M
M16	17.0	60	29,0	WTA/M16-60/M16	66653408M

Einschraubfräser Reduzierung
Threaded arbor reductions



G (mm)	G1 (mm)	D2 (mm)	d1 (mm)	A (mm)	D1 (mm)	D (mm)	L2 (mm)	Bezeichnung Designation	Ident No.
M5	M8	8,5		40			6,5	WTA/M5-40/M8	5056849
M8	M10	10,5	8,5	40	13,8	18,0	7,8	WTA/M8-40/M10	5056850
M8	M12	12,5	8,5	60	13,8	21,0	7,8	WTA/M8-60/M12	5056851
M10	M12	12,5	10,5	40	18,0	21,0	7,8	WTA/M10-40/M12	5056853
M10	M16	17,0	10,5	60	18,0	29,0	7,8	WTA/M10-60/M16	5056854
M12	M16	17,0	12,5	40	21,0	29,0	7,8	WTA/M12-40/M16	5056855

DIN 69871 (SK)



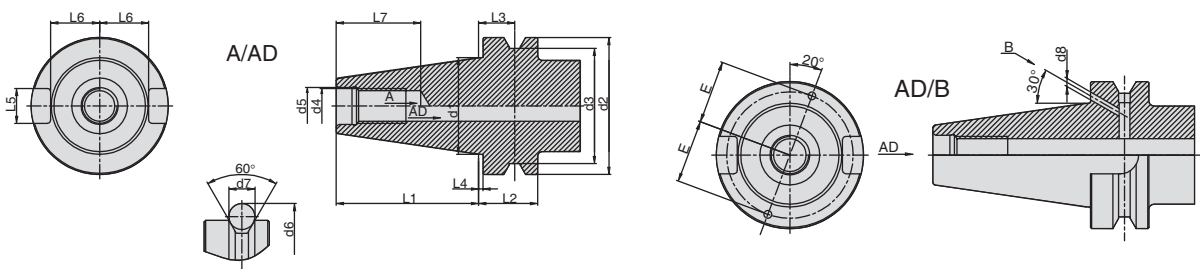
Form "A"
ohne Kühlmittelzufuhr
Without coolant feed

Form "AD"
mit zentraler Kühlmittelzufuhr
With through coolant feed
Centrally (Axial)

Form "AD/B"
mit zentraler Kühlmittelzufuhr
über Bund oder zentral
With coolant feed
Via flange or centrally (Axial)

Size	d1	d2	d3	d4	d5	d6	d7	d8	d9	L1	L2	L3	L4	L5	L6	L7	L8	E
30	31,75	50,00	44,30	M12	13	59,30	7	45max	–	47,80	15,9	11,1	33.5min	16,1	16,4	19,0	15,0	21
40	44,45	44,45	56,25	M16	17	72,30	7	50max	4	71,6	15,9	11,1	42.5min	16,1	22,8	25,0	18,5	27
50	69,85	69,85	91,25	M24	25	107,25	7	80max	6	104,95	15,9	11,1	61.5min	25,4	35,5	37,7	30,0	42

JIS B6339 (MAS 403 BT)



Form "A"
ohne Kühlmittelzufuhr
Without coolant feed

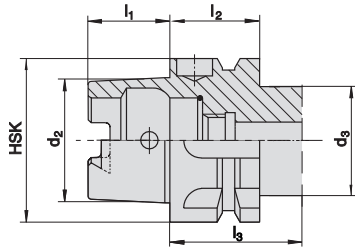
Form "AD"
mit zentraler Kühlmittelzufuhr
With through coolant feed
Centrally (Axial)

Form "AD/B"
mit zentraler Kühlmittelzufuhr
über Bund oder zentral
With coolant feed
Via flange or Centrally (Axial)

Size	d1	d2	d3	d4	d5	d6	d7	d8	L1	L2	L3	L4	L5	L6	L7	E
30	31,75	46	38	M12	12,5	56,14	8	–	48,40	20	13,60	2	16,1	16,3	34min	–
40	44,45	63	53	M16	17,0	75,68	10	4	65,40	25	16,30	2	16,1	22,5	43min	27
50	69,85	100	85	M24	25,0	119,02	15	6	101,80	35	23,20	3	25,7	35,4	62min	42

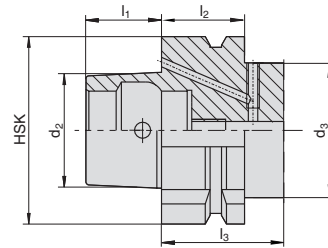
Übersicht Werkzeugschäfte HSK DIN 69893
 Overview tool shanks HSK DIN 69893

Form A



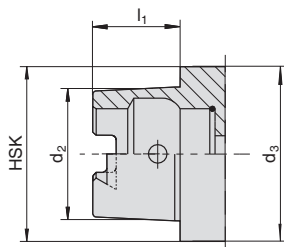
Der Hohlchaftkegel für automatischen Werkzeugwechsel mit Greif- und Indexiernut. Manuelle Betätigung durch Zugriffsbohrung im Kegel möglich. Das Drehmoment wird kraft- und formschlüssig übertragen.

Form B



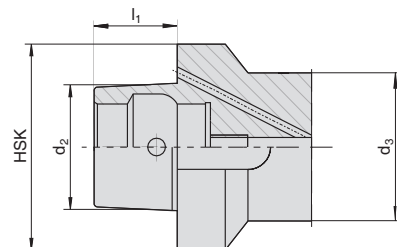
Hollow-shank taper for automatic tool changing with gripping and locating groove. Manual operation is possible through the access hole in the taper. Torque is transmitted both positively and non-positively.

Form C



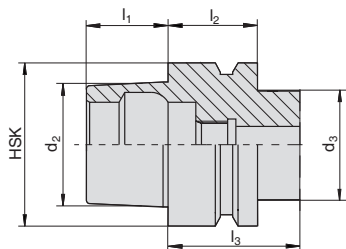
Der Hohlchaftkegel für manuellen Werkzeugwechsel. Betätigung durch Zugriffsbohrung im Kegel. Das Drehmoment wird kraft- und formschlüssig übertragen.

Form D



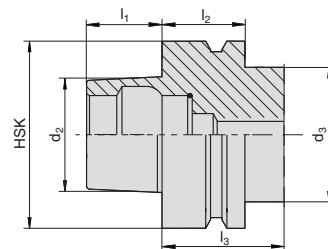
Hollow-shank taper for manual tool changing. Operation is possible through the access hole in the taper. Torque is transmitted both positively and non-positively.

Form E



Der Hohlchaftkegel für automatischen Werkzeugwechsel (manuelle Betätigung durch Zugriffsbohrung im Kegel nicht möglich). Das Drehmoment wird kraftschlüssig übertragen.

Form F

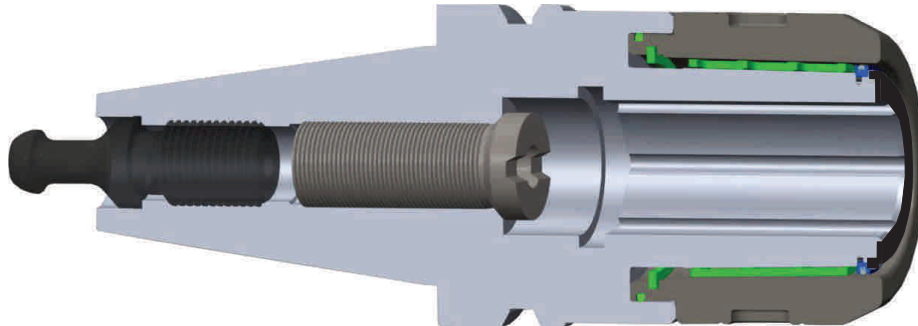


Hollow-shank taper for automatic tool changing (manual operation through access hole in taper not possible). Torque is transmitted non-positively.

HSK-A+C	d2	d3	l1	l2	l3	HSK-B+D	d2	d3	l1	l2	l3
32	24	26	16	20	35	40	24	34	16	20	34
40	30	34	20	20	35	50	30	42	20	26	42
50	38	42	25	26	42	63	38	53	25	26	42
63	48	53	32	26	42	80	48	68	32	26	42
80	60	68	40	26	42	100	60	68	40	29	42
100	75	68	50	29	45						

HSK-E	d2	d3	l1	l2	l3	HSK-F	d2	d3	l1	l2	l3
25	19	20	13	10	20	50	30	42	20	26	42
32	24	26	16	20	35	63	38	63	25	26	42
40	30	34	20	20	35	80	48	68	32	26	42
50	38	42	25	26	42						
63	48	53	32	26	42						

Hochleistungsfräserspannfutter - Zusätze und Vorteile
 Hi-Power Milling Chuck - Features & Advantages



Rundlaufgenauigkeit
 (hat mit Gewinde gar nichts zu tun)
 Run out accuracy

At 3D - 5 Micron

Staub- und wasserdicht
 Dustproof & Waterproof

Ungespannte position
 Unclamped position

Eingespannte position
 Clamped position

Drehmoment Vergleich, oder besser
 Spannkraftvergleich
 Clamping Torque comparison

Product	Torque (Nm)
Collect chuck holder	~200
Hydro Grip Product Range	~450
HPMC	~900

Aufbau des Fräserspannfutters
 Structure of milling chuck

Hauptkörper des Futteres
 Main body of Chuck

Rollenbolzen
 Roller Pin

Genutete Scheibe
 Slotted Disc

Spannmutter
 Clamping nut

Coolant seal

Genutete scheinbe
 Slotted disc

Zusätze und Vorteile

- Sehr hohe Spannkraft führt zu verbesserter Produktivität und Werkzeuglebenszeit
- Geringe Reibung durch Konstruktion mit Rollenlager
- Hoher Gewindeauslauf-Präzision - 5 Mikrometer @ 3D. Niedriger Verschleiss an der Schneide bedeutet höhere Standzeiten
- Ausgezeichnete Oberflächenqualität da weniger Vibrationen
- Mit Antikorrosionsbeschichtung geschützt
- Ein neu entworfener Dichtmechanismus der Mutter verhindert Verunreinigung durch Staub und Kühlflüssigkeit, dadurch wird die Standzeit des Werkzeugs erhöht

Features and Advantages

- Very high clamping force leads to increased productivity and tool life
- Roller bearing design provides high friction resistance
- High run out accuracy - 5 micron @ 3D. Less wear on cutting edge leads to significant increase in tool life
- Excellent finish on machined surface due to less vibration
- Protected with anti-corrosive coating
- Perfect seal mechanism of clamping nut, prevents dust and coolant entry. Thereby, extending life of the holder

BILZ

BILZ WERKZEUGFABRIK
GmbH & Co. KG
Vogelsangstr. 8
73760 Ostfildern
Deutschland
Fon + 49 711 348 01 - 0
Fax + 49 711 348 12 56
info@bilz.de
www.bilz.de

in alliance with

